



Transcriptional profiling and therapeutic targeting of oxidative stress in neuroinflammation

Andrew S. Mendiola^{1,9}, Jae Kyu Ryu^{1,2,9}, Sophia Bardehle¹, Anke Meyer-Franke¹, Kenny Kean-Hooi Ang^{3,4}, Chris Wilson^{3,4}, Kim M. Baeten¹, Kristina Hanspers¹, Mario Merlini¹, Sean Thomas¹, Mark A. Petersen^{1,5}, Alexander Williams¹, Reuben Thomas¹, Victoria A. Rafalski¹, Rosa Meza-Acevedo¹, Reshmi Tognatta¹, Zhaoqi Yan¹, Samuel J. Pfaff^{3,4}, Michael R. Machado¹, Catherine Bedard¹, Pamela E. Rios Coronado¹, Xiqian Jiang^{1,6}, Jin Wang^{1,6}, Michael A. Pleiss¹, Ari J. Green^{2,7}, Scott S. Zamvil^{1,2}, Alexander R. Pico¹, Benoit G. Bruneau^{1,5,8}, Michelle R. Arkin^{3,4} and Katerina Akassoglou^{1,2}✉

Oxidative stress is a central part of innate immune-induced neurodegeneration. However, the transcriptomic landscape of central nervous system (CNS) innate immune cells contributing to oxidative stress is unknown, and therapies to target their neurotoxic functions are not widely available. Here, we provide the oxidative stress innate immune cell atlas in neuroinflammatory disease and report the discovery of new druggable pathways. Transcriptional profiling of oxidative stress-producing CNS innate immune cells identified a core oxidative stress gene signature coupled to coagulation and glutathione-pathway genes shared between a microglia cluster and infiltrating macrophages. Tox-seq followed by a microglia high-throughput screen and oxidative stress gene network analysis identified the glutathione-regulating compound acivicin, with potent therapeutic effects that decrease oxidative stress and axonal damage in chronic and relapsing multiple sclerosis models. Thus, oxidative stress transcriptomics identified neurotoxic CNS innate immune populations and may enable discovery of selective neuroprotective strategies.

Oxidative injury is a pathologic feature linked to neurodegeneration, myelin damage and disease progression in multiple sclerosis (MS) and other neurological diseases^{1–7}. Oxidative stress mediated by reactive oxygen species (ROS) release from CNS innate immune cells promotes neurodegeneration and demyelination^{1,3,8–10}. Innate immune-mediated oxidative injury has been proposed as a critical process underlying progression of MS from the relapsing phenotype to relentless neurodegeneration^{11,12}. In progressive MS, neurodegeneration is associated with robust microglia activation and oxidative stress^{12,13}. However, the mechanisms in innate immune cells that trigger oxidative injury in neuroinflammation remain poorly understood. Single-cell technology has led to an appreciation of the heterogeneity of CNS innate immune responses with distinct gene profiles between microglia and CNS infiltrating macrophages in MS, Alzheimer's disease (AD) and related animal models^{14–21}. However, the functional transcriptomic landscape of oxidative stress-inducing innate immune cells is unknown. Furthermore, the discovery of drugs capable of selectively suppressing innate immune-driven neurodegeneration has been hindered by the lack of molecular understanding of neurotoxic functions of CNS innate immune cells.

Here, we report the innate immune cell atlas of oxidative stress in neuroinflammatory disease and the discovery of new therapeutic

targets. To functionally dissect the oxidative stress signature of CNS innate immunity at the single cell level, we developed Toxic RNA sequencing (Tox-seq) to transcriptionally profile ROS⁺ innate immune cells. We identified a core oxidative stress signature shared among a microglia cluster and subsets of infiltrating myeloid cells in mice, as well as microglia from MS lesions. Tox-seq, followed by microglia high-throughput screening (HTS) of a library of 1,907 clinical drugs and bioactive compounds and oxidative stress gene network analysis, identified glutathione transferase activity and the compound acivicin, which inhibits the degradation of the antioxidant glutathione by targeting γ -glutamyl transferase (GGT). Therapeutic administration of acivicin reversed clinical signs, decreased oxidative stress and protected from neurodegeneration in chronic experimental autoimmune encephalomyelitis (EAE), even when administered 80 d after disease onset. Thus, these studies determine the transcriptomic landscape of oxidative stress in CNS innate immunity and propose druggable pathways for therapeutic targeting of neurotoxic innate immune populations.

Results

Single-cell oxidative stress transcriptome of CNS innate immunity. To functionally profile the oxidative stress transcriptome of CNS innate immunity and identify neuroprotective drugs, we

¹Gladstone Institutes, San Francisco, CA, USA. ²Department of Neurology and Weill Institute for Neurosciences, University of California San Francisco, San Francisco, CA, USA. ³Small Molecule Discovery Center, University of California San Francisco, San Francisco, CA, USA. ⁴Department of Pharmaceutical Chemistry, School of Pharmacy, University of California San Francisco, San Francisco, CA, USA. ⁵Department of Pediatrics, University of California San Francisco, San Francisco, CA, USA. ⁶Department of Pharmacology and Chemical Biology, Baylor College of Medicine, Houston, TX, USA. ⁷Department of Ophthalmology, University of California San Francisco, San Francisco, CA, USA. ⁸Cardiovascular Research Institute, University of California San Francisco, San Francisco, CA, USA. ⁹These authors contributed equally: Andrew S. Mendiola, Jae Kyu Ryu. ✉e-mail: kakassoglou@gladstone.ucsf.edu

developed a strategy for single-cell RNA-seq (scRNA-seq) transcriptional profiling of ROS⁺ CNS innate immune cells (Tox-seq) and performed microglia HTS of a small molecule library, followed by network analysis (Extended Data Fig. 1). To obtain ROS⁺ innate immune cells, all live cells isolated from spinal cord were stained for intracellular ROS *ex vivo* using 2',7'-dichlorofluorescein diacetate (DCFDA) and the innate immune cell fraction was collected by CD11b⁺ fluorescence-activated cell sorting (FACS). DCFDA is a membrane-permeable fluorescent redox indicator probe that detects cellular oxidant stress, including ROS, reactive nitrogen species and elevated iron²². For Tox-seq, we analyzed transcriptomes of 8,701 CD11b⁺ cells labeled for ROS production via scRNA-seq from spinal cords of healthy mice or at onset of disease (clinical score 1) of chronic EAE induced in C57Bl/6 mice by the epitope of amino acids 35–55 of myelin oligodendrocyte glycoprotein (MOG) ('MOG_{35–55} EAE'), an autoimmune animal model for MS with paralysis and inflammatory demyelination (Extended Data Fig. 2a–e and Supplementary Table 1). Using unsupervised clustering analysis²³ overlaid with functional ROS characterization, we identified transcriptionally distinct CD11b⁺ROS⁺ and CD11b⁺ROS[−] populations as visualized by uniform manifold approximation and projection (UMAP) (Fig. 1a and Extended Data Fig. 2e). The majority of clusters with at least 50% ROS⁺ cells were infiltrating monocyte/macrophage clusters (Mp; clusters Mp6 to Mp11), whereas microglia clusters (Mg) 3 and 5 were at least 15% ROS⁺ cells (Fig. 1a–c). ROS⁺ cells were not identified in healthy spinal cord clusters (Fig. 1b,c). Functional enrichment gene ontology (GO) analysis of differentially expressed genes (DEGs) from monocyte/macrophage clusters with ROS-producing cells identified 'reactive oxygen species metabolic process' as a top biological process term in EAE (Supplementary Tables 2 and 3). This core oxidative stress signature (for example, *Cybb*, *Ncf2*, *Ncf4* and *Gpx1*) was represented in infiltrating monocyte/macrophage clusters and only in the Mg5 microglia cluster (Fig. 1d). Cluster analysis and differential gene expression further showed that ROS⁺ cells were transcriptionally heterogeneous (Fig. 1e and Extended Data Fig. 2f,g). Homeostatic microglia markers (for example, *P2ry12*, *Tmem119*, *Cx3cr1*, *Hexb* and *Olfml3*) were expressed in all EAE microglia clusters (Mg3, Mg4 and Mg5) at lower levels than in healthy microglia clusters (Mg1 and Mg2) (Fig. 1e,f and Supplementary Table 2). Similarly to previous studies indicating that tissue dissociation procedures affect immediate early response gene expression^{21,24}, we identified differentially expressed immediate early response genes in microglia cluster Mg2 (Supplementary Table 2), which were not excluded from the analysis. In addition to microglia and monocyte/macrophage clusters, we identified two subsets of dendritic cells as described elsewhere²⁰. These results suggest functional heterogeneity of CNS innate immune populations in relation to oxidative stress.

CNS innate immune clusters with oxidative stress and antigen-presenting signatures. Single cells were overlaid with gene markers from the core oxidative stress signature and combined with unbiased GO analysis of DEGs from microglia and monocyte/macrophage subclusters (Fig. 2a–d). Subcluster analysis identified five microglia and seven monocyte/macrophage clusters (Fig. 2a). Microglia gene markers, such as *Cx3cr1*, were highly expressed in all Mg clusters, but not in monocyte/macrophage clusters (Fig. 2b and Supplementary Tables 3 and 4). Cell types of CNS-resident and infiltrating immune cells were further validated according to published gene signatures or single-cell mass cytometry (CyTOF)^{18–20,25–27}, including the highly conserved microglia core genes (Extended Data Fig. 3a,b). Clusters MgV and MpI shared 'reactive oxygen species metabolic process' as top GO term, whereas clusters MgIII and MpIII were enriched for 'antigen processing and presentation' (Fig. 2c, Extended Data Fig. 3c and Supplementary Tables 3 and 4). To identify differentially expressed ROS and antigen-presenting genes

in single-cell clusters, we compared expression of the pro-oxidant gene *Cybb*, which encodes the nicotinamide adenine dinucleotide phosphate (NADPH) oxidase subunit 2 (gp91-phox) with antigen-presenting gene *H2-Ab1*, which encodes major histocompatibility complex (MHC) II. We selected NADPH oxidase (*Cybb*) because it is a key producer of ROS upregulated in microglia in the cortex of progressive MS and its genetic depletion is protective in EAE and AD mouse models^{3,6,28}. Clusters MgV, MpI and MpII had increased *Cybb* and *H2-Ab1* expression (Fig. 2d; *Cybb*/*H2-Ab1*, yellow), whereas clusters MgIII, MgIV, MpIII and MpIV had only high expression of *H2-Ab1* (Fig. 2d; *Cybb*/*H2-Ab1*, red). Healthy microglia clusters MgI and MgII did not express *Cybb* and *H2-Ab1* (Fig. 2d; *Cybb*/*H2-Ab1*, black). These results were further validated with subcluster overlay of *Cd74*, which encodes the MHC II invariant chain and *Cyba*, which encodes NADPH oxidase subunit p22-phox. MgV, MpIII and MpI clusters had high coexpression of NADPH oxidase and antigen-presenting genes (Fig. 2d; *Cyba*/*Cybb* and *Cd74*/*H2-Ab1*, yellow). Cells coexpressing *Cyba*/*Cybb* were overlaid with Tox-seq clusters to validate ROS⁺ innate immune cells (Extended Data Fig. 3d). MgV highly expressed *Cyba*/*Cybb* genes, although less than infiltrating monocyte/macrophage clusters. Microglia activation and homeostatic signatures have been identified in active/chronic MS lesions by single nuclei RNA-seq¹⁶. By comparing the EAE Tox-seq dataset in our study with human MS microglia signatures¹⁶, we found that among microglia populations, MgV exclusively expressed genes detected in microglia from MS lesions that regulate antigen presentation, glutathione, oxidative stress and iron uptake, such as *Cd74*, *Gpx1* and *Fth1* (Fig. 2e and Supplementary Table 4). These results suggest differential contribution of CNS innate immune clusters to oxidative stress and antigen presentation.

Coexpression of oxidative stress, coagulation and glutathione-pathway genes. Tox-seq identified the MgV microglia cluster as a ROS⁺ CNS innate immune population enriched with oxidative stress genes. The transcriptomic signature of MgV showed the highest expression for oxidative stress, coagulation, inflammatory, antigen presenting and pattern recognition receptor markers and the lowest expression of homeostatic markers (Fig. 3). MgV exclusively expressed pattern recognition receptor C-type lectin domain family 4 member E (*Clec4e*) and *F10*, which encodes coagulation factor X (Fig. 3a,b). In addition to higher expression of pro-oxidant and antigen-presenting genes *Cybb* and *H2-Ab1*, MgV was enriched in proinflammatory gene expression, including *Il1b* (Fig. 3c–e). The homeostatic microglia markers *P2ry12*, *Sparc*, *Cx3cr1* and *Tmem119* were expressed in the MgV cluster, but at lower levels than in healthy microglia clusters MgI and MgII (Fig. 3f, Extended Data Fig. 3a,e and Supplementary Table 4). Genes specific to the MgV cluster were validated *in situ* by immunostaining for their encoded proteins NADPH oxidase subunit 2 (gp91-phox), MHC II, coagulation factor X and CLEC4E in EAE spinal cords (Fig. 3g–i and Extended Data Fig. 3f). For independent validation and detection of low level transcripts, we characterized the transcriptomes of ROS-producing and antigen-presenting cells (APCs) with bulk RNA-seq of FACS-purified ROS⁺ and MHC II⁺ microglia and monocyte/macrophages from EAE spinal cord (Extended Data Fig. 4a–e and Supplementary Table 5). Gene clustering of DEGs identified distinct upregulated genes in subsets of microglia and monocyte/macrophages that were primarily ROS-producing (Extended Data Fig. 4f,g). Hierarchical clustering of GO analysis revealed 'scavenger receptor activity' and 'glutathione transferase activity' upregulated in both ROS⁺ microglia and monocyte/macrophages (Fig. 4a and Supplementary Table 6). The ROS⁺ microglia profile included three coexpression networks for high significance GO terms, namely 'blood coagulation' (for example *F9*, *Itgb3*, *Serpinc1*, *Gp9* and *Gp1ba*; *P*=0.011), 'phosphorylation' (for example *Eif2ak3*, *Stk30*, *Pfkfb1*, *Map3k12* and

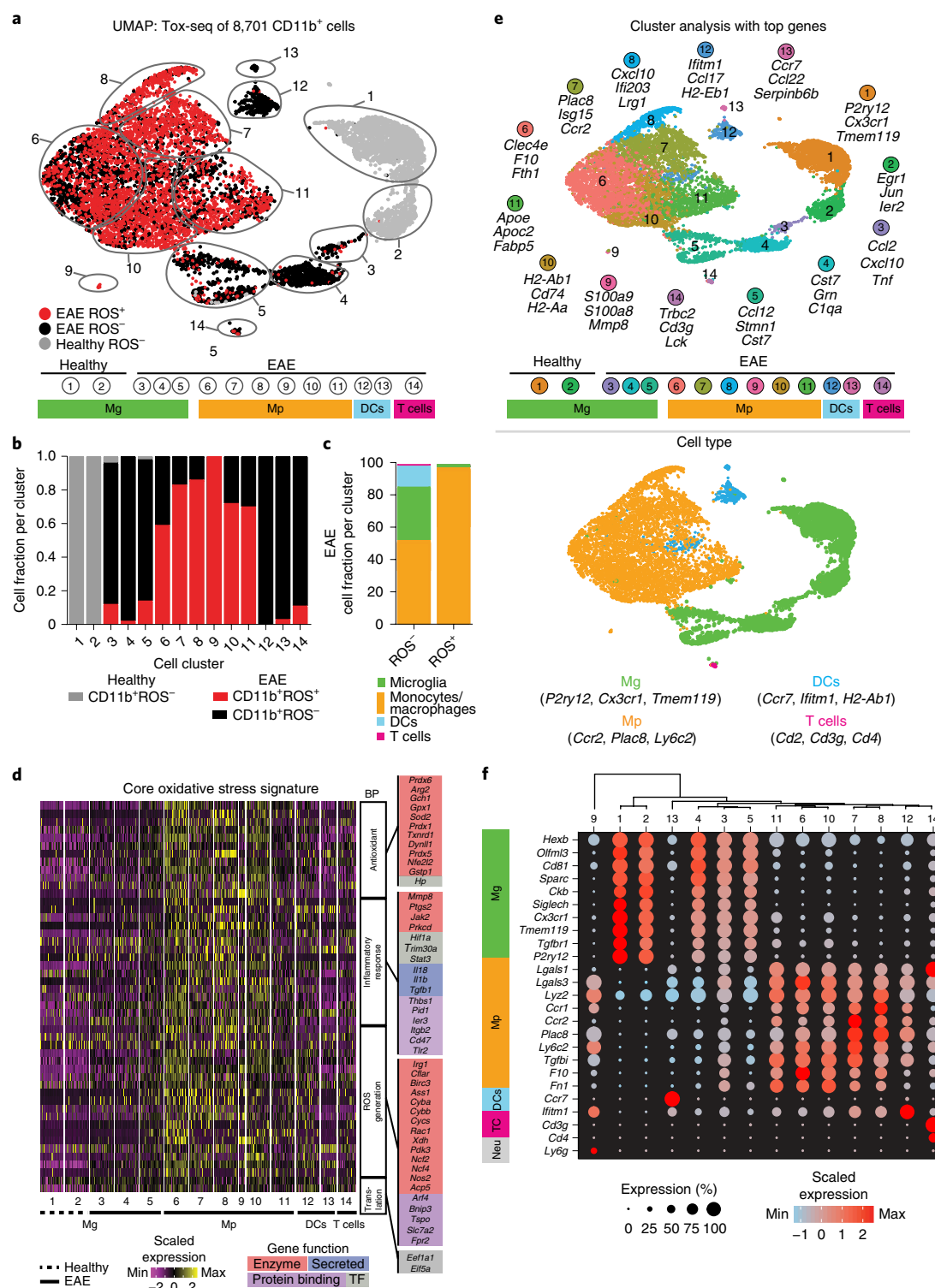


Fig. 1 | Single cell oxidative stress transcriptome of CNS innate immunity. **a**, UMAP plot of single CD11b⁺ROS⁻ and CD11b⁺ROS⁺ cells identified by unsupervised clustering analysis ($n=8,701$ cells from spinal cord of two healthy and two EAE mice). The gray outlines demarcate individual clusters and color scheme is based on Tox-seq label, which is a combination of the sample type (healthy or EAE) and ROS expression status (CD11b⁺ROS⁻ and CD11b⁺ROS⁺). Clusters are further grouped by cell type, as identified by gene signatures shown in **e**. Cells from EAE mice were collected at onset of disease (clinical score of 1). DC, dendritic cell. **b**, Fraction of cells in each cluster colored based on Tox-seq label (key). **c**, Percentage of CD11b⁺ROS⁻ and CD11b⁺ROS⁺ cells from EAE mice. **d**, Single-cell expression heat map of genes from GO term 'reactive oxygen species metabolic process' ($P=1.38 \times 10^{-19}$, accumulative hypergeometric test with Benjamini–Hochberg correction). Genes are grouped by gene function and related biological process (BP) terms. Fifty cells were randomly selected from each cluster for visualization ($n=8,701$ cells from spinal cords of two healthy and two EAE mice). TF, transcription factor. **e**, UMAP plot of 8,701 CD11b⁺ cells with clusters numerically labeled (top) or pseudocolored based on cell type (bottom). Selected top three DEGs per cluster (top) and representative cell type gene signatures (bottom) are shown. **f**, Dot plot of gene markers across all CD11b⁺ clusters. The dendrogram above the dot plot depicts unsupervised hierarchical clustering. TC, T cell; Neu, neutrophils.

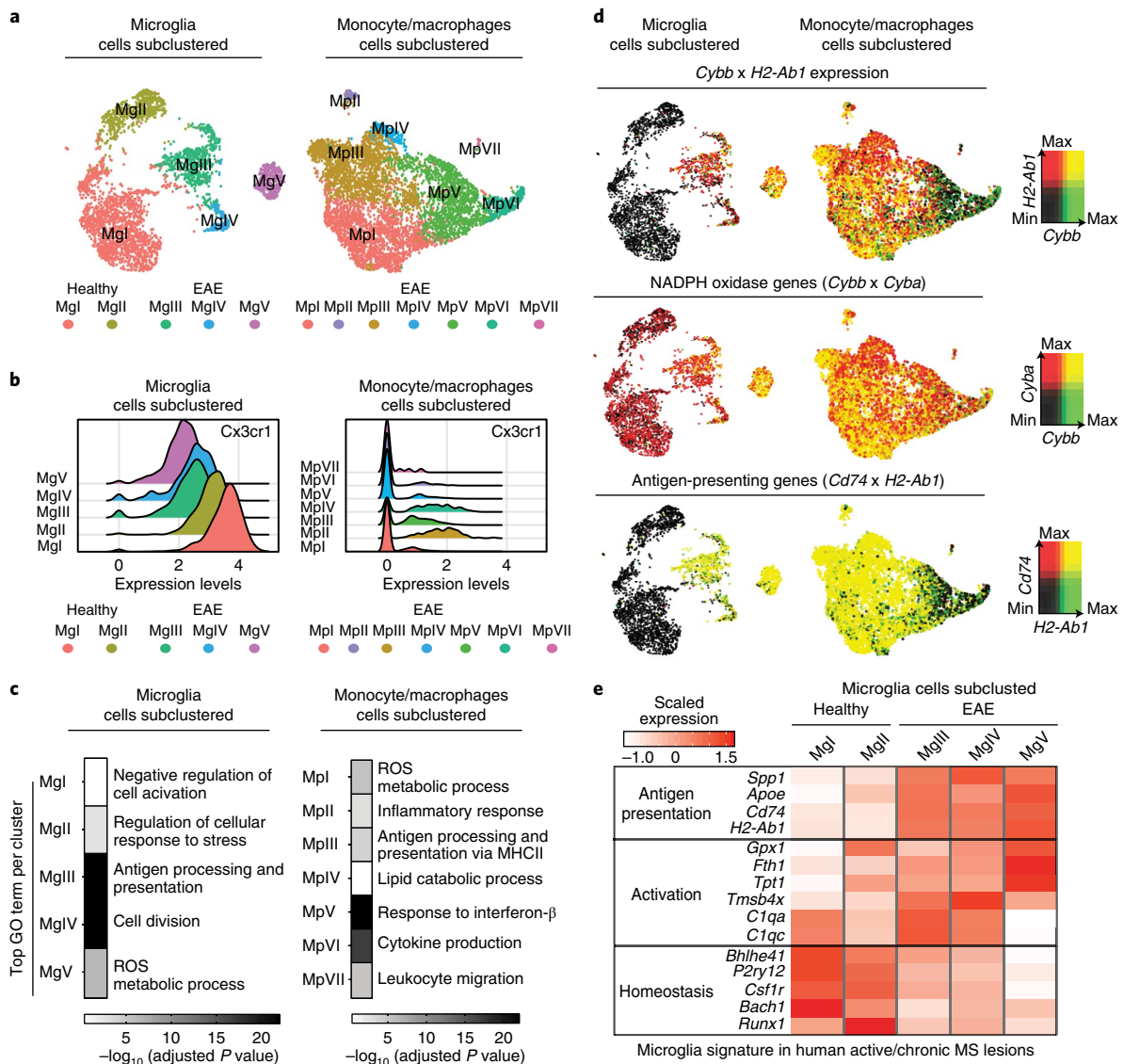


Fig. 2 | Overlay of CNS innate immune cell clusters with oxidative stress core signature genes. a, UMAP plots of unsupervised subclustering analysis of microglia ($n=3,033$ cells from two healthy and two EAE mice) or monocytes/macrophages ($n=5,240$ cells from two EAE mice) showing clusters numerically labeled. **b**, Ridge plot of *Cx3cr1* gene expression levels across all microglia and monocyte/macrophage clusters. **c**, Heat maps of top significant GO terms for each single-cell cluster ($P < 0.05$, accumulative hypergeometric test with Benjamini-Hochberg correction). Five microglia clusters; $n=3,033$ cells from two healthy and two EAE mice or seven monocyte/macrophage clusters; $n=5,240$ cells from two EAE mice. **d**, UMAP plots of microglia or monocyte/macrophage clusters showing single-cell gene expression overlays for *Cybb* and *H2-Ab1* (top), *Cybb* and *Cyba* (middle) and *Cd74* and *H2-Ab1* (bottom). Cells highly coexpressing both gene marker pairs are depicted as double-positive cells in yellow (right key). Clusters from healthy and EAE mice are shown (bottom key). **e**, Heat map depicting comparison of Tox-seq microglia subclusters in EAE with signatures of microglia from human active/chronic MS lesions¹⁶. Average gene expression is depicted as scaled z score expression (key).

Brsk2; $P=0.015$) and ‘lipid biosynthesis’ (for example *Ggt5*, *Fads2*, *Hsd17b1* and *Srd5a1*; $P=0.028$; Fig. 4b). These data show that coagulation genes are coexpressed with oxidative stress genes and are in accordance with the role of perivascular microglia as primary sites for increased coagulation activity, fibrin deposition and ROS release in EAE lesions^{29,30}.

Selection of acivicin by microglia HTS and oxidative stress gene network analysis. Tox-seq identified the coagulation pathway as mechanistically coupled to oxidative stress. Fibrin, the end product of the coagulation cascade, is deposited in brains from MS and AD and has pro-oxidant functions in related animal models^{9,10,31}. We developed a fibrin-induced HTS workflow in innate immune cells to discover new small molecule inhibitors to suppress oxida-

tive stress. The HTS workflow consisted of a primary automated microglia HTS of 1,907 compounds that was followed by secondary assays for compound characterization. We first developed a high-content HTS of primary microglia stimulated by fibrin or the bacterial innate immune activator lipopolysaccharide (LPS) (Fig. 5a). We screened 1,907 clinical drugs and bioactive compounds using increased cell size ($\geq 800 \mu\text{m}^2$) as a marker of activation and decreased size ($< 150 \mu\text{m}^2$) as a marker of toxicity (Supplementary Table 7). We identified 128 compounds that inhibited microglia activation by $\geq 50\%$ without toxicity ($\leq 3\%$ cell death; Fig. 5b and Supplementary Tables 7 and 8). Using the Kyoto Encyclopedia of Genes and Genomes database, we annotated the molecular targets of 31 compounds with potential clinical relevance for neurological diseases (Supplementary Tables 7 and 9). This analysis identified

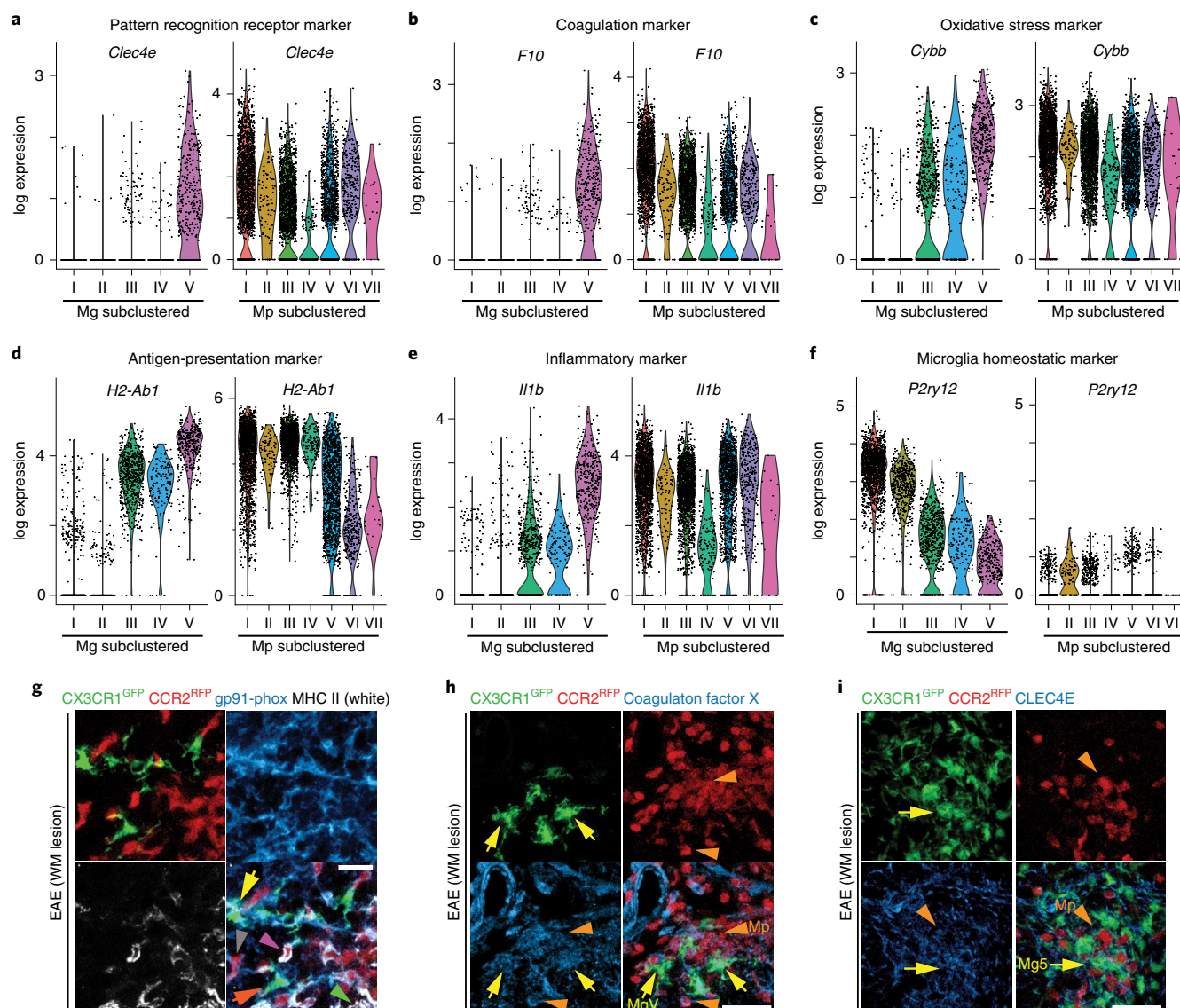


Fig. 3 | Oxidative stress core signature in EAE. **a–f**, Violin plots of log expression levels of *Clec4e* (**a**), *F10* (encodes coagulation factor X) (**b**), *Cybb* (encodes NADPH oxidase subunit gp91-phox) (**c**), *H2-Ab1* (encodes MHC II) (**d**), *Il1b* (**e**) and *P2ry12* (**f**) across microglia and monocyte/macrophage subclustered single-cell populations. Violin plots depict minimum and maximum expression, with points showing single-cell expression levels. Five Mg clusters; $n = 3,033$ cells from two healthy and two EAE mice or monocyte/macrophage clusters; $n = 5,240$ cells from two EAE mice. **g**, Confocal microscopy of white matter (WM) lesions from *Cx3cr1^{GFP/+}Ccr2^{RFP/+}* mice with MOG₃₅₋₅₅-induced EAE, showing CX3CR1⁺ cells (green), CCR2⁺ cells (red) and immunoreactivity for the oxidative stress marker NADPH oxidase subunit gp91-phox (blue) and the antigen-presentation marker MHC II (white). Data are representative of $n = 4$ mice; tissues were collected at onset of EAE (clinical score of 1). Yellow arrow, gp91-phox⁺MHC II⁺ microglia; orange arrow, gp91-phox⁺MHC II⁺ monocyte/macrophages; green arrowhead, gp91-phox⁺MHC II⁺ monocyte/macrophages; gray arrowhead, gp91-phox⁺MHC II⁺ monocyte/macrophages. **h,i**, Confocal microscopy from spinal cords of mice as in **g**, showing CX3CR1⁺ cells (green), CCR2⁺ cells (red) and immunoreactivity for coagulation factor X (blue) (**h**) or CLEC4E (blue) (**i**). Data are representative of $n = 4$ mice; tissues were collected at onset of EAE (clinical score of 1). Arrows and arrowheads denote microglia and monocyte/macrophages, respectively. Scale bar, 50 μ m (**g–i**).

the glutathione degrading enzyme GGT as the primary target of the HTS hit compound acivicin (Fig. 5b and Supplementary Tables 7–9). GGT degrades the antioxidant glutathione and its dysregulation interferes with redox homeostasis and oxidative stress responses³². Notably, Tox-seq had identified genes regulating glutathione metabolism in ROS⁺ CNS innate immune cells. To examine whether acivicin-targeted glutathione and redox pathways were differentially regulated in oxidative stress-producing CNS innate immune cells, we generated a comprehensive oxidative stress gene network and overlaid it with the Tox-seq dataset. Using PathVisio and Cytoscape^{33,34}, we constructed an oxidative stress gene network including the GGT pathway; glutathione metabolism, biosynthesis,

uptake and breakdown; the NADPH oxidase complex; the redox cycle and glutathionylation. We computationally overlaid the oxidative stress gene network with genes differentially expressed in ROS⁺ versus MHC II⁺ subpopulations of microglia and infiltrating monocytes identified by bulk Tox-seq (Fig. 5c). To represent both microglia and infiltrating monocyte gene changes on the same gene network, we created a split-box view with expression levels in Mg and infiltrating monocytes on the left and right sides, respectively (Fig. 5c). This overlay revealed 25 genes that were specifically upregulated in ROS⁺ microglia or monocyte/macrophages throughout the oxidative stress network, including the acivicin target genes *Ggt1* and *Ggt5*, glutathione transferases *Gsto2* and *Gstt2*

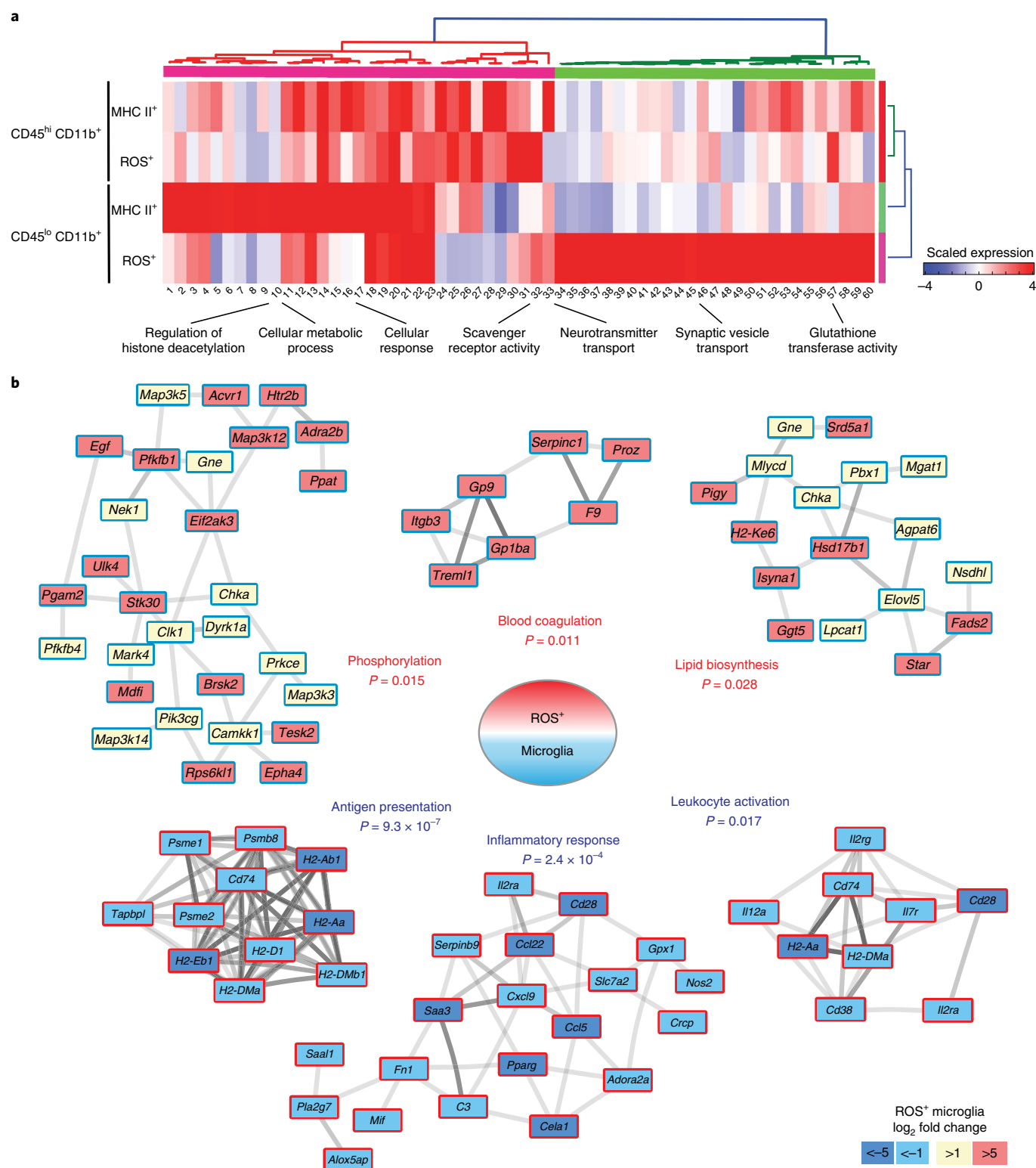
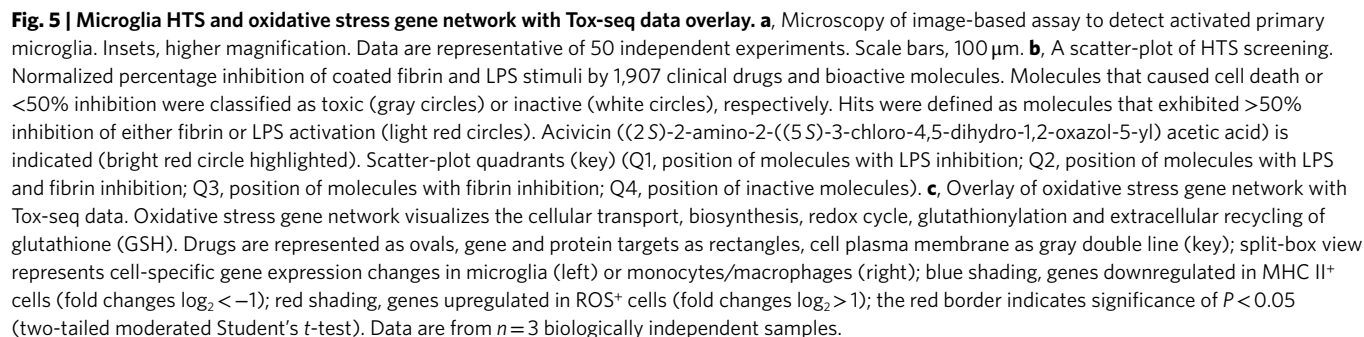


Fig. 4 | Bulk Tox-seq and coexpression gene network analysis of ROS⁺ microglia in EAE. a, Heat map of GO analysis from bulk RNA-seq of ROS⁺ and MHC II⁺ microglia (CD45^{lo}CD11b⁺) and infiltrating monocytes/macrophages (CD45^{hi}CD11b⁺) compared to respective baseline (ROS⁻ and MHC II⁻) cells from EAE mice. Key indicates scaled z score expression. Data are from $n = 3$ biologically independent samples per group. **b**, Coexpression gene networks from bulk RNA-seq of ROS⁺ microglia. Darker interaction lines represent greater evidence for coexpression. Key indicates log₂ fold change expression and is relative to MHC II⁺ microglia; red border indicates significance cutoff of $P < 0.05$ (accumulative hypergeometric test with Benjamini-Hochberg correction). Data are from $n = 3$ biologically independent samples.

and γ -glutathione peroxidase *Gpx7* (Fig. 5c). All 25 genes (*Ggt1*, *Ggt5*, *Ggt7*, *Abcc2*, *Slco2a1*, *Foxp3*, *Alox5*, *Gsr*, *Gsto1*, *Gsto2*, *Gstt2*, *Gstt3*, *Mgst2*, *Gstm1*, *Gstp2*, *Gstk1*, *Gpx7*, *Slc6a9*, *Oplah*, *Cbs*, *Prdx2*,

S100a8, *S100a9*, *Sod3* and *Txnrd3*) meet the criteria of having log₂ > 1 for either microglia and/or monocyte/macrophages and no downregulation for either subpopulation. Expression of *Cyba* and



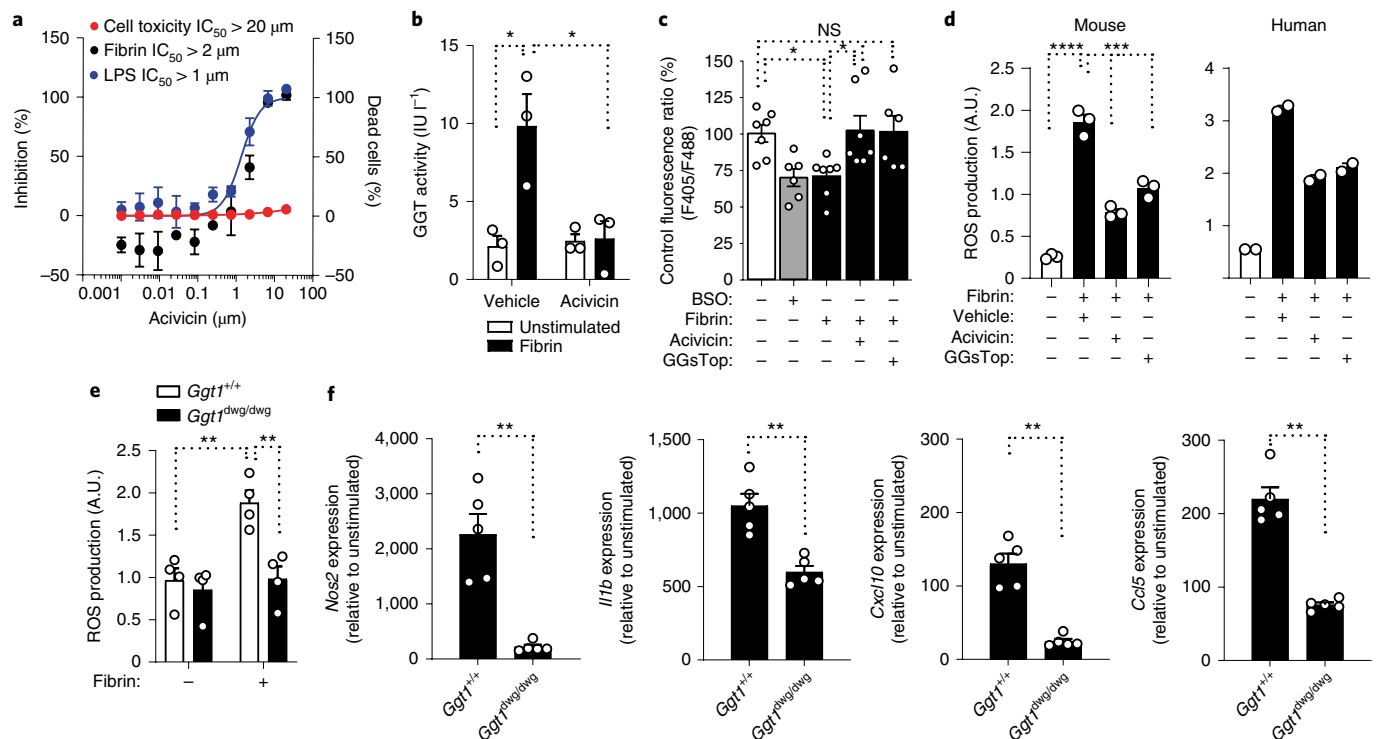


Fig. 6 | GGT inhibition in innate immune cells. **a**, Normalized dose response of acivicin on fibrin-induced (black circles) or LPS-induced (blue circles) microglia activation without cell toxicity $<20 \mu\text{M}$ (red circles) (key). Data are from one experiment performed in triplicate. IC_{50} , median inhibitory concentration. **b**, GGT activity in bone-marrow-derived macrophages (BMDMs) left unstimulated or stimulated with fibrin after acivicin or vehicle control treatment (key). Data are from $n=3$ independent experiments performed in duplicate. **c**, Quantification of glutathione (GSH) RealThiol probe (F405/F488 ratio) by real-time confocal imaging of live BMDMs. The fluorescence ratio F405/F488 of RealThiol probe reflects the ratio of RealThiol probe bound to intracellular GSH over unbound intracellular probe and is proportional to the GSH concentration. F405/F488 was expressed as a percentage of that of the untreated cells (control). Data are from $n=7$ independent experiments. BSO, buthionine sulfoximine. **d**, Quantification of ROS production assessed via dihydroethidium (DHE) in mouse BMDMs (left) and human macrophages (right) unstimulated or stimulated for 24 h with fibrin in the presence of acivicin or GGTsTop (grid plot). Data are from $n=3$ independent experiments performed in quadruplicate (mouse) and sextuplicate (human). A.U., arbitrary units. **e**, Quantification of ROS production (assessed via DHE) in BMDMs isolated from $Ggt1^{+/+}$ or $Ggt1^{dwg/dwg}$ mice (key) left unstimulated or stimulated for 24 h with fibrin. Data are from $n=4$ mice per group performed in quintuplicate. **f**, Quantitative PCR analysis of *Nos2*, *Cxcl10*, *Ccl5* and *Il1b* expression in BMDMs isolated from $Ggt1^{+/+}$ and $Ggt1^{dwg/dwg}$ mice (key) stimulated with fibrin. Data are from $n=5$ mice per group. Each circle symbol represents an individual experiment (**a–d**) or mouse (**e,f**). Data are shown as mean \pm s.d. (**a**) or mean \pm s.e.m. (**b–f**). * $P < 0.05$, ** $P < 0.01$, *** $P < 0.001$, **** $P < 0.0001$; NS, not significant, as determined by two-way analysis of variance (ANOVA) with Sidak's multiple comparisons test (**b,e**), two-tailed paired Student's *t*-test (**c**), one-way ANOVA with Tukey's multiple comparisons test (**d**) or two-tailed Mann-Whitney *U*-test (**f**).

Cybb as identified by bulk RNA-seq was lower than Tox-seq single cell analysis potentially due to low representation of the *Cybb/Cyba* enriched cluster. On the basis of these findings, we tested the effects of acivicin on innate immune cells and animal models of neuroinflammation.

Acivicin suppresses oxidative stress in innate immune cells.

Although acivicin has been studied primarily in cancer cells³⁵, its functions in inflammation and neurological diseases are poorly understood. We tested the effects of acivicin in innate immune cell activation using a series of secondary assays, such as ROS generation, glutathione regulation, gene expression of pro-oxidant and inflammatory genes, GGT activity and antigen presentation. Acivicin inhibited fibrin- and LPS-induced microglia activation in a dose-dependent manner (Fig. 6a). Acivicin did not affect microglia or macrophage cell viability in vitro as assessed by cell number quantification and FACS analysis (Extended Data Fig. 5a–c). Total cell blood count of white blood cells, red blood cells and platelets were similar after 10 d of treatment with acivicin compared to saline control (Extended Data Fig. 5d). Microglia numbers in the spinal cord were similar in mice treated with acivicin for 14 d compared

to saline (Extended Data Fig. 5e). These results are in accordance with previous studies showing that acivicin at a similar concentration range does not affect neuronal viability³⁶.

GGT degrades the antioxidant glutathione, resulting in increased oxidative stress³². Because GGT activation is a key mechanism regulating redox homeostasis, we tested the effects of fibrin in GGT activation and glutathione metabolism. By GGT activity assay and quantitative real-time cell imaging of intracellular glutathione³⁷, we showed that fibrin increased GGT activity and induced degradation of glutathione (Fig. 6b,c and Extended Data Fig. 6a,b). Acivicin and the specific GGT inhibitor GGTsTop restored glutathione levels in fibrin-treated macrophages and decreased ROS production (Fig. 6b,d). *Ggt1*^{dwg/dwg} mice with a nucleotide deletion in *Ggt1* have reduced GGT activity and altered glutathione levels³⁸. ROS generation and expression of oxidative injury and proinflammatory genes were reduced in fibrin- or LPS-stimulated macrophages isolated from *Ggt1*^{dwg/dwg} mice compared to *Ggt1*^{+/+} controls (Fig. 6e,f and Extended Data Fig. 6c). Collectively, these findings suggest that fibrin disrupts redox homeostasis and that inhibition of GGT suppresses oxidative and inflammatory functions in innate immune cells.

Therapeutic effects of acivicin in neuroinflammation. In patients with MS and neuromyelitis optica, serum GGT concentrations correlate with clinical disability, blood–brain barrier disruption and inflammatory markers³⁹. *GGTLC1*, which encodes the GGT light chain 1, is detected in the cortex of patients with MS and is associated with oxidative damage and neuronal injury⁴⁰. Serum GGT activity positively correlates with dementia risk and glutathione S-transferase- α in the plasma of AD patients correlates with late-onset AD progression^{41,42}. We tested the effects of acivicin treatment in mouse models of autoimmune acute and chronic progressive neuroinflammation, as well as in models of microglia-mediated neurodegeneration. We selected four models of EAE, simulating key aspects of MS, namely relapsing–remitting EAE induced by epitope of amino acids of proteolipid protein (PLP) in SJL/J mice ('PLP_{139–151} EAE'); adoptive transfer of CD4⁺ T cells differentiated under conditions that polarize cells into T_H1 subset of helper T cells; MOG_{35–55} EAE; and progressive EAE induced in non-obese diabetic (NOD) mice by the epitope of amino acids 35–55 of MOG ('NOD-MOG_{35–55} EAE').

Using immunohistochemistry and FACS, we first tested the expression of GGT in EAE spinal cord. GGT was not detected in healthy spinal cord, but was increased in microglia and infiltrating macrophages in EAE lesions (Fig. 7a,b). Administration of acivicin suppressed clinical severity during relapses in PLP_{139–151} EAE (Fig. 7c). Given prophylactically, acivicin delayed disease onset and severity in adoptive transfer EAE induced by T cells specific for PLP_{139–151} and in active MOG_{35–55} EAE and decreased GGT activity in the EAE spinal cord (Fig. 7d,e and Extended Data Fig. 7a). Similarly, prophylactic administration of GGsTop reduced neurologic signs in MOG_{35–55} EAE (Extended Data Fig. 7b). In MOG_{35–55} EAE mice, acivicin selectively decreased interferon (IFN)- γ - and interleukin (IL)-17-producing T cells and suppressed encephalitogenic T cell proliferation only in the presence of APCs (Extended Data Fig. 7c–h), suggesting that in autoimmune models acivicin may indirectly affect T cell responses by suppressing APC function. Acivicin markedly reduced oxidative stress markers 4-hydroxynonenal (4-HNE) and serum protein carbonyl content, proinflammatory gene expression, demyelination, neuronal damage, microglia activation and macrophage infiltration in spinal cord lesions in MOG_{35–55} EAE mice (Fig. 7f–i and Extended Data Fig. 7i).

Immunization of NOD mice with MOG_{35–55} results in acute neurological impairment followed by a chronic phase of progressive accumulation of disability⁴³. In chronic NOD-MOG_{35–55} EAE, therapeutic administration of acivicin during the chronic phase even 80 d after EAE induction suppressed progression as indicated by decreased clinical signs (Fig. 8a,b). Acivicin reduced demyelination, axonal damage and expression of GGT1, as well as the oxidative stress markers inducible nitric oxide synthase (iNOS) and NADPH oxidase subunit gp91-phox during the chronic phase of disease (Fig. 8c,d and Extended Data Fig. 7j). In addition to autoimmune models, we also tested acivicin in a microglia-driven model of neurodegeneration induced by LPS injection in the substantia nigra (SN)⁴⁴. Acivicin blocked GGT activity in the SN after LPS injection and decreased microglia activation and improved dopaminergic neuronal survival (Extended Data Fig. 8). These results suggest that acivicin exerts potent anti-inflammatory and neuroprotective effects in neuroinflammatory disease.

Discussion

Our study reveals the oxidative stress transcriptome of CNS innate immune cells in neuroinflammation and identifies druggable pathways to suppress neurotoxic innate immunity. By developing a functional transcriptomic and drug discovery pipeline consisting of deep-sequencing, small-molecule screening and pathway analysis, we identified new innate immune cell populations involved in oxidative stress and discovered upstream targeting of glutathione

metabolism and redox homeostasis as a therapeutic strategy in neuroinflammation and neurodegeneration. Using Tox-seq, we discovered that innate immune cells share a core oxidative stress gene signature mechanistically coupled to coagulation, antigen presentation and glutathione pathways. Our findings introduce the concept of distinct molecular circuits governing oxidative stress and immune-mediated neurodegeneration and reveal their molecular signatures. Given that oxidative stress-producing resident and infiltrating innate immune cells are key players in MS progression^{3,12,45}, the oxidative stress signature could enable the identification of specific cell subpopulations contributing to neurotoxicity that could be further characterized with cell-fate mapping studies. Molecular convergence of innate immune cells to an oxidative stress core signature could be the springboard for the development of therapies to selectively target CNS innate immune populations that promote oxidative cell injury. Given the broad range of diseases with oxidative stress, neurodegeneration and cognitive deficits, our findings could have implications for a wide range of diseases including MS, AD and traumatic brain injury.

Our study revealed previously unknown molecular links between coagulation and oxidative stress. In neuroinflammatory lesions, we identified in situ expression of coagulation genes promoting fibrin formation, such as genes encoding coagulation factors IX and X, vitamin K-dependent plasma glycoprotein and the von Willebrand factor receptors glycoproteins IX and Ib. Notably, coagulation gene expression was differentially increased in ROS⁺ CNS innate immune cells that coexpressed genes regulating oxidative stress, such as the NADPH oxidase subunit gp91-phox and GGT and iron metabolism. Dysregulation of the coagulation pathway and fibrin deposition correlates with cortical damage, microglia activation and neuronal loss in MS and EAE^{29,30,46–48}. Administration of anticoagulants or inhibition of the interaction of fibrin with the CD11b-CD18 integrin receptor (also known as Mac-1, complement receptor 3 and $\alpha_M\beta_2$) reduces clinical signs, oxidative stress and neurodegeneration in MS and AD animal models^{9,10,31}. Fibrin signaling via the CD11b-CD18 receptor may potentiate the cross-talk of NADPH oxidase with the GGT pathway⁴⁹ leading to redox regulation. Indeed, fibrin activates NADPH oxidase⁹ and GGT (this study) to promote degradation of glutathione and oxidative stress in innate immune cells. Furthermore, inhibition of fibrin interaction with CD11b-CD18 or inhibition of NADPH oxidase^{9,10} or GGT (this study) suppresses fibrin-induced ROS generation. NADPH oxidase activation and degradation of glutathione by fibrin could be key pro-oxidant mechanisms in diseases with blood–brain barrier disruption, neuroinflammation, neurodegeneration and cognitive decline. Thus, it is possible that there is a positive-feedback loop between coagulation, oxidative stress and proinflammatory response, whereby subpopulations of innate immune cells promote local synthesis of coagulation factors to increase fibrin deposition and promote oxidative injury. Local increases in coagulation activity by innate immune cell subpopulations as an oxidative stress mechanism could be relevant for other diseases in the brain and periphery with vascular pathology associated with fibrin deposition, oxidative injury and tissue damage^{5,6,10,31,50–52}.

We selected acivicin as an upstream regulator of glutathione and redox homeostasis, two key pathways identified by Tox-seq in ROS-producing CNS innate immune cells. GGT-mediated cleavage of glutathione causes iron redox cycling, which stimulates release of hydroxyl radicals³⁵. Thus, redox restoration by either acivicin or the specific GGT inhibitor GGsTop may protect against EAE progression by homeostatic regulation of glutathione in oxidative stress-producing innate immune cells. In accordance, oxidative stress markers were reduced by pharmacologic inhibition of GGT by GGsTop in renal reperfusion injury⁵³. Reduction of oxidative stress by inhibition of GGT could also protect from neurodegeneration and cognitive deficits in neurological diseases

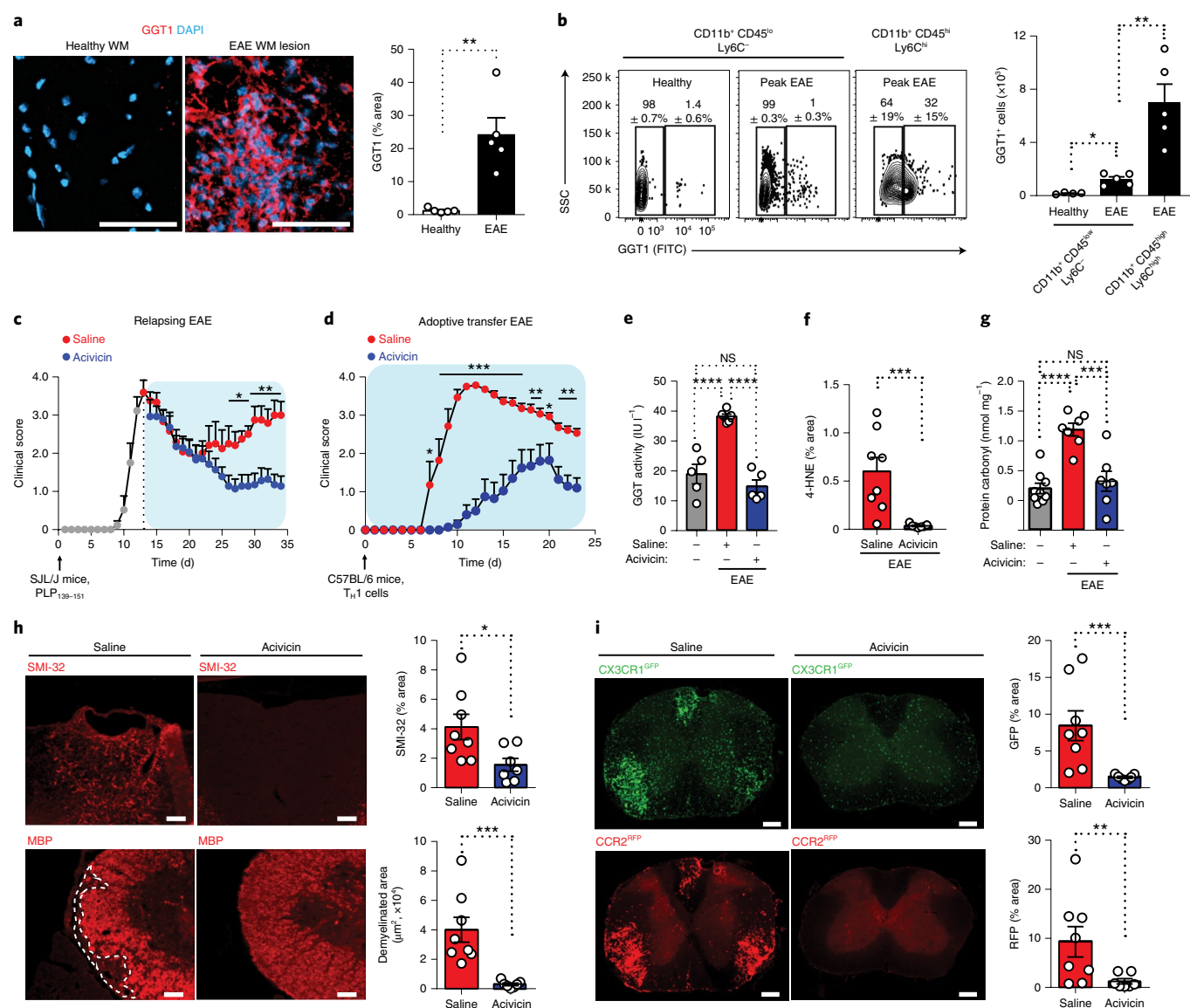


Fig. 7 | Effects of acivicin in EAE. a, Confocal microscopy of spinal cord sections from unimmunized healthy mice and MOG₃₅₋₅₅-induced EAE mice at peak disease, immunostained for GGT1 (red). Nuclei are stained with 4',6-diamidino-2-phenylindole (DAPI; blue). WM, white matter; scale bars, 100 μm. Image quantification of GGT1 immunoreactivity is shown. Data are from *n* = 5 mice per group. **b**, Representative flow cytometry contour plots (left) showing GGT1 expression in CD11b⁺CD45^{lo}Ly6C⁻ (microglia) and CD11b⁺CD45^{hi}Ly6C^{hi} (infiltrating macrophage) cells from spinal cord of mice with MOG₃₅₋₅₅-induced EAE or unimmunized healthy controls. GGT1 expression is depicted as a percentage of gated population ± s.d. Quantification (bottom) of GGT1⁺ microglia and macrophages is shown. Cells were analyzed at peak of EAE (clinical score of 3). Data are from *n* = 4 mice (healthy) and *n* = 5 mice (EAE). **c**, Clinical scores for relapsing EAE of SJL/J mice immunized (upward arrow) with PLP₁₃₉₋₁₅₁, followed by therapeutic injection of acivicin or saline (key) every day starting at the peak of the initial paralytic episode (dotted vertical line). Data are from *n* = 7 mice (EAE + acivicin) and *n* = 6 mice (EAE + saline). **d**, Clinical scores of adoptive transfer EAE induced by T_H1 cells (upward arrow) after daily prophylactic administration of acivicin or saline (key) starting day 0. Data are from *n* = 10 mice (EAE + acivicin) and *n* = 7 mice (EAE + saline). **e**, GGT activity in spinal cords from healthy or MOG₃₅₋₅₅-EAE mice treated with acivicin or saline (grid plot). Data are from *n* = 5 mice (control), *n* = 6 mice (EAE + saline) and *n* = 5 mice (EAE + acivicin), each performed in technical duplicates. **f**, Quantification of 4-HNE immunostaining in spinal cords from mice with peak MOG₃₅₋₅₅ EAE disease after prophylactic injection with acivicin or saline. Data are from *n* = 8 mice (saline) and *n* = 7 mice (acivicin). **g**, Quantification of serum protein carbonyl levels in MOG₃₅₋₅₅ EAE mice after prophylactic injection with acivicin or saline. Data are from *n* = 9 mice (Healthy, control), *n* = 7 mice (EAE + saline) and *n* = 7 mice (EAE + acivicin). **h**, Microscopy (left) of spinal cord sections from mice with MOG₃₅₋₅₅-induced EAE treated with acivicin or saline, showing SMI-32 immunoreactivity (top; indicative of axonal damage) and myelin basic protein (MBP) immunoreactivity (bottom; indicative of myelin); dashed lines demarcate demyelinated WM of the spinal cord column. Scale bars, 25 μm (top), 80 μm (bottom). Image quantification of SMI-32 and MBP immunoreactivity is shown (right). Data are from *n* = 8 mice (EAE + saline) and *n* = 7 mice (EAE + acivicin). **i**, Microscopy (left) of spinal cord sections from Cx3cr1^{GFP/+}Ccr2^{RFP/+} mice with peak MOG₃₅₋₅₅ EAE treated with acivicin or saline, showing CX3CR1⁺ (GFP, green) and CCR2⁺ (RFP, red) cells. Image quantification (right) of CX3CR1⁺ (top) and CCR2⁺ cells (bottom) is shown. Scale bars, 100 μm. Data are from *n* = 8 mice (EAE + saline) and *n* = 7 mice (EAE + acivicin). Each circle symbol (a,b,e-i) represents an individual mouse. Data are shown as mean ± s.e.m. (a-i). **P* < 0.05, ***P* < 0.01, ****P* < 0.001, *****P* < 0.0001; NS, not significant, as determined by two-tailed Mann-Whitney *U*-test (a,b,f,h,i), one-way ANOVA with Tukey's multiple comparisons test (e,g) or two-tailed permutation test (c,d).

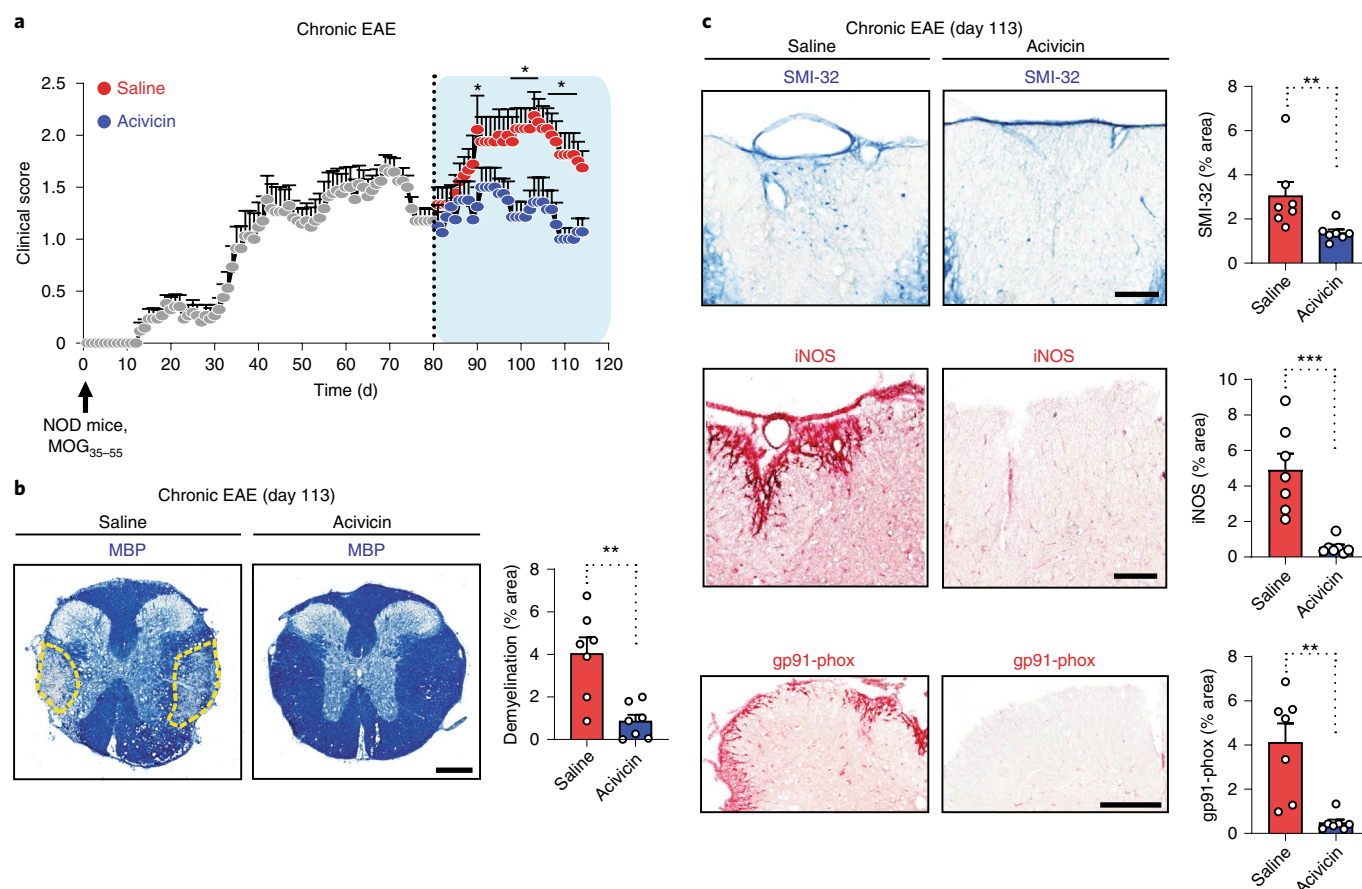


Fig. 8 | Acivicin suppresses demyelination, axonal damage and oxidative stress in chronic EAE. **a**, Clinical scores for chronic EAE of NOD mice immunized (upward arrow) with MOG₃₅₋₅₅, followed by therapeutic injection of acivicin or saline (key) every day starting at day 80 of the chronic phase (dotted vertical line). Data are from $n = 8$ mice (EAE + acivicin) and $n = 9$ mice (EAE + saline). **b**, Microscopy (left) of spinal cord sections from mice with chronic MOG₃₅₋₅₅ EAE treated with acivicin or saline every day starting at day 80 until day 113 labeled for MBP; right, quantification of area devoid of MBP immunoreactivity. Dashed lines (left) demarcate demyelinated WM of the spinal cord column. Scale bar, 300 μ m. Data are from $n = 7$ mice per group. **c**, Microscopy (left) of spinal cord sections from mice with chronic MOG₃₅₋₅₅ EAE treated with acivicin or saline every day starting at day 80 until day 113 labeled for SMI-32 immunoreactivity (top), iNOS (middle) or NADPH oxidase subunit gp91-phox (bottom); right, quantification of area with SMI-32 immunoreactivity, area with iNOS immunoreactivity and area with gp91-phox immunoreactivity in WM. Scale bar, 100 μ m. Data are from $n = 7$ mice per group. Each circle symbol represents an individual mouse (**b,c**). Data are shown as mean \pm s.e.m. (**a-c**). * $P < 0.05$, ** $P < 0.01$, *** $P < 0.001$, as determined by two-tailed permutation test (**a**) or two-tailed Mann-Whitney U -test (**b,c**).

such as MS, AD and brain injury. In EAE, acivicin suppressed inflammatory and pro-oxidant pathways and decreased axonal damage, demyelination and peripheral cell recruitment into the CNS. Suppression of oxidative stress and reduction of chemokines that facilitate cell recruitment by acivicin might reduce myeloid cell numbers and decrease lesion size. Acivicin also regulates glutamate metabolism and leukotriene responses with potential effects on immune cell recruitment, neuronal and T cell functions^{35,54,55}. Cell sorting and scRNA-seq studies will be required to determine the drug selectivity of acivicin at the single cell level and its effects on oxidative stress resistance and additional pro-oxidant and inflammatory markers. These studies could decipher mechanisms linking oxidative stress and peripheral cell recruitment into the CNS in EAE and other models of neurological disease. Acivicin exhibits dose-limiting toxicity in anticancer trials, potentially due to interference with recycling of glutamine³⁵. Given the toxicity of high doses of acivicin in the clinic or the consequences of global depletion of GGT1 in mice³⁵, identification of safe GGT inhibitors or glutamine antagonists modulating glutathione metabolism might facilitate the restoration of redox hemostasis in neurological diseases.

In summary, by generating the first oxidative stress cell atlas of innate immunity, we identified cell populations and molecular mechanisms involved in oxidative injury and neurotoxicity in neuroinflammatory disease. We defined transcriptional signatures of oxidative stress genes that can be used as a resource and follow-up studies to validate additional gene targets, cell populations and drugs from HTS. Furthermore, we advance a method, Tox-seq, which can be used to determine the functional role of oxidative stress-producing cells in a wide range of disease states. Tox-seq can be further combined with molecular probes that selectively detect different ROS to provide information on selective regulation of oxidative stress. Given the multiple roles of ROS in oxidative damage and redox regulation⁵⁶, Tox-seq could reveal molecular pathways governing ROS-mediated functions in physiology and pathology. Integration of functional transcriptomics and HTS may prioritize druggable pathways that could enhance cherry-picking or in silico screens to identify compounds of interest for preclinical testing. Thus, oxidative stress transcriptomics and drug discovery approaches could identify and target neurotoxic CNS innate immune populations and lead to the development of selective neuroprotective strategies.

Online content

Any methods, additional references, Nature Research reporting summaries, source data, extended data, supplementary information, acknowledgements, peer review information; details of author contributions and competing interests; and statements of data and code availability are available at <https://doi.org/10.1038/s41590-020-0654-0>.

Received: 3 November 2019; Accepted: 4 March 2020;

Published online: 13 April 2020

References

- Nikić, I. et al. A reversible form of axon damage in experimental autoimmune encephalomyelitis and multiple sclerosis. *Nat. Med.* **17**, 495–499 (2011).
- Locatelli, G. et al. Mononuclear phagocytes locally specify and adapt their phenotype in a multiple sclerosis model. *Nat. Neurosci.* **21**, 1196–1208 (2018).
- Fischer, M. T. et al. NADPH oxidase expression in active multiple sclerosis lesions in relation to oxidative tissue damage and mitochondrial injury. *Brain* **135**, 886–899 (2012).
- Heppner, F. L., Ransohoff, R. M. & Becher, B. Immune attack: the role of inflammation in Alzheimer disease. *Nat. Rev. Neurosci.* **16**, 358–372 (2015).
- Nortley, R. et al. Amyloid β oligomers constrict human capillaries in Alzheimer's disease via signaling to pericytes. *Science* **365**, eaav9518 (2019).
- Park, L. et al. NADPH-oxidase-derived reactive oxygen species mediate the cerebrovascular dysfunction induced by the amyloid β peptide. *J. Neurosci.* **25**, 1769–1777 (2005).
- Junker, A. et al. Extensive subpial cortical demyelination is specific to multiple sclerosis. *Brain Pathol.* <https://doi.org/10.1111/bpa.12813> (2020).
- Back, S. A., Gan, X., Li, Y., Rosenberg, P. A. & Volpe, J. J. Maturation-dependent vulnerability of oligodendrocytes to oxidative stress-induced death caused by glutathione depletion. *J. Neurosci.* **18**, 6241–6253 (1998).
- Ryu, J. K. et al. Fibrin-targeting immunotherapy protects against neuroinflammation and neurodegeneration. *Nat. Immunol.* **19**, 1212–1223 (2018).
- Merlini, M. et al. Fibrinogen induces microglia-mediated spine elimination and cognitive impairment in Alzheimer's disease. *Neuron* **101**, 1099–1108 (2019).
- Weiner, H. L. A shift from adaptive to innate immunity: a potential mechanism of disease progression in multiple sclerosis. *J. Neurol.* **255** (Suppl. 1), 3–11 (2008).
- Lassmann, H., van Horssen, J. & Mahad, D. Progressive multiple sclerosis: pathology and pathogenesis. *Nat. Rev. Neurol.* **8**, 647–656 (2012).
- Mahad, D. H., Trapp, B. D. & Lassmann, H. Pathological mechanisms in progressive multiple sclerosis. *Lancet Neurol.* **14**, 183–193 (2015).
- Keren-Shaul, H. et al. A unique microglia type associated with restricting development of Alzheimer's disease. *Cell* **169**, 1276–1290 (2017).
- Hammond, T. R. et al. Single-cell RNA sequencing of microglia throughout the mouse lifespan and in the injured brain reveals complex cell-state changes. *Immunity* **50**, 253–271 (2019).
- Schirmer, L. et al. Neuronal vulnerability and multilineage diversity in multiple sclerosis. *Nature* **573**, 75–82 (2019).
- Mathys, H. et al. Single-cell transcriptomic analysis of Alzheimer's disease. *Nature* **570**, 332–337 (2019).
- Gosselin, D. et al. An environment-dependent transcriptional network specifies human microglia identity. *Science* **356**, eaal3222 (2017).
- Krasemann, S. et al. The TREM2-APOE pathway drives the transcriptional phenotype of dysfunctional microglia in neurodegenerative diseases. *Immunity* **47**, 566–581 (2017).
- Jordão, M. J. C. et al. Single-cell profiling identifies myeloid cell subsets with distinct fates during neuroinflammation. *Science* **363**, eaat7554 (2019).
- Van Hove, H. et al. A single-cell atlas of mouse brain macrophages reveals unique transcriptional identities shaped by ontogeny and tissue environment. *Nat. Neurosci.* **22**, 1021–1035 (2019).
- Diehn, M. et al. Association of reactive oxygen species levels and radioresistance in cancer stem cells. *Nature* **458**, 780–783 (2009).
- Butler, A., Hoffman, P., Smibert, P., Papalexi, E. & Satija, R. Integrating single-cell transcriptomic data across different conditions, technologies and species. *Nat. Biotechnol.* **36**, 411–420 (2018).
- Li, Q. et al. Developmental heterogeneity of microglia and brain myeloid cells revealed by deep single-cell RNA sequencing. *Neuron* **101**, 207–223 (2019).
- Ajami, B. et al. Single-cell mass cytometry reveals distinct populations of brain myeloid cells in mouse neuroinflammation and neurodegeneration models. *Nat. Neurosci.* **21**, 541–551 (2018).
- Mrdjen, D. et al. High-dimensional single-cell mapping of central nervous system immune cells reveals distinct myeloid subsets in health, aging and disease. *Immunity* **48**, 380–395 (2018).
- Geirsdottir, L. et al. Cross-species single-cell analysis reveals divergence of the primate microglia program. *Cell* **179**, 1609–1622 (2019).
- Choi, B. Y. et al. Inhibition of NADPH oxidase activation reduces EAE-induced white matter damage in mice. *J. Neuroinflammation* **12**, 104 (2015).
- Davalos, D. et al. Early detection of thrombin activity in neuroinflammatory disease. *Ann. Neurol.* **75**, 303–308 (2014).
- Davalos, D. et al. Fibrinogen-induced perivascular microglial clustering is required for the development of axonal damage in neuroinflammation. *Nat. Commun.* **3**, 1227 (2012).
- Petersen, M. A., Ryu, J. K. & Akassoglou, K. Fibrinogen in neurological diseases: mechanisms, imaging and therapeutics. *Nat. Rev. Neurosci.* **19**, 283–301 (2018).
- Drozd, R. et al. γ -glutamyl transferase dependent generation of reactive oxygen species from a glutathione/transferrin system. *Free Radic. Biol. Med.* **25**, 786–792 (1998).
- Shannon, P. et al. Cytoscape: a software environment for integrated models of biomolecular interaction networks. *Genome Res.* **13**, 2498–2504 (2003).
- Kutmon, M. et al. PathVisio 3: an extendable pathway analysis toolbox. *PLoS Comput. Biol.* **11**, e1004085 (2015).
- Corti, A., Franzini, M., Paolicchi, A. & Pompella, A. γ -glutamyl transferase of cancer cells at the crossroads of tumor progression, drug resistance and drug targeting. *Anticancer Res.* **30**, 1169–1181 (2010).
- Koga, M. et al. Glutathione is a physiologic reservoir of neuronal glutamate. *Biochem. Biophys. Res. Commun.* **409**, 596–602 (2011).
- Jiang, X. et al. Quantitative real-time imaging of glutathione. *Nat. Commun.* **8**, 16087 (2017).
- Tsuji, T., Yamada, K. & Kunieda, T. Characterization of the *dwg* mutations: *dwg* and *dwg*^{Bayer} are new mutant alleles of the *Ggt1* gene. *Mamm. Genome* **20**, 711–719 (2009).
- Shu, Y. et al. Association of serum γ -glutamyltransferase and C-reactive proteins with neuromyelitis optica and multiple sclerosis. *Mult. Scler. Relat. Disord.* **18**, 65–70 (2017).
- Fischer, M. T. et al. Disease-specific molecular events in cortical multiple sclerosis lesions. *Brain* **136**, 1799–1815 (2013).
- Iturria-Medina, Y. et al. Early role of vascular dysregulation on late-onset Alzheimer's disease based on multifactorial data-driven analysis. *Nat. Commun.* **7**, 11934 (2016).
- Kunutsor, S. K. & Laakkonen, J. A. Gamma-glutamyltransferase and risk of future dementia in middle-aged to older Finnish men: a new prospective cohort study. *Alzheimers Dement.* **12**, 931–941 (2016).
- Mayo, L. et al. Regulation of astrocyte activation by glycolipids drives chronic CNS inflammation. *Nat. Med.* **20**, 1147–1156 (2014).
- Herrera, A. J., Castano, A., Venero, J. L., Cano, J. & Machado, A. The single intranigral injection of LPS as a new model for studying the selective effects of inflammatory reactions on dopaminergic system. *Neurobiol. Dis.* **7**, 429–447 (2000).
- International Multiple Sclerosis Consortium. Multiple sclerosis genomic map implicates peripheral immune cells and microglia in susceptibility. *Science* **365**, eaav1888 (2019).
- Magliozzi, R. et al. Iron homeostasis, complement, and coagulation cascade as CSF signature of cortical lesions in early multiple sclerosis. *Ann. Clin. Transl. Neurol.* **6**, 2150–2163 (2019).
- Yates, R. L. et al. Fibrin(ogen) and neurodegeneration in the progressive multiple sclerosis cortex. *Ann. Neurol.* **82**, 259–270 (2017).
- Han, M. H. et al. Proteomic analysis of active multiple sclerosis lesions reveals therapeutic targets. *Nature* **451**, 1076–1081 (2008).
- Ravuri, C., Svineng, G., Pankiv, S. & Huseby, N. E. Endogenous production of reactive oxygen species by the NADPH oxidase complexes is a determinant of γ -glutamyltransferase expression. *Free Radic. Res.* **45**, 600–610 (2011).
- Iadecola, C. The pathobiology of vascular dementia. *Neuron* **80**, 844–866 (2013).
- Rodríguez-Rodríguez, A., Egea-Guerrero, J. J., Murillo-Cabezas, F. & Carrillo-Vico, A. Oxidative stress in traumatic brain injury. *Curr. Med. Chem.* **21**, 1201–1211 (2014).
- Davalos, D. & Akassoglou, K. Fibrinogen as a key regulator of inflammation in disease. *Semin. Immunopathol.* **34**, 43–62 (2012).
- Yamamoto, S. et al. Preventive effect of GGsTop, a novel and selective γ -glutamyl transpeptidase inhibitor, on ischemia/reperfusion-induced renal injury in rats. *J. Pharmacol. Exp. Ther.* **339**, 945–951 (2011).
- Birkner, K. et al. β 1-integrin- and KV1.3 channel-dependent signaling stimulates glutamate release from Th17 cells. *J. Clin. Invest.* **130**, 715–732 (2020).
- Sedlak, T. W. et al. The glutathione cycle shapes synaptic glutamate activity. *Proc. Natl Acad. Sci. USA* **116**, 2701–2706 (2019).
- Schieber, M. & Chandel, N. S. ROS function in redox signaling and oxidative stress. *Curr. Biol.* **24**, R453–R462 (2014).

Publisher's note Springer Nature remains neutral with regard to jurisdictional claims in published maps and institutional affiliations.

© The Author(s), under exclusive licence to Springer Nature America, Inc. 2020

Methods

Animals. SJL/J, NOD, C57BL/6 and *Ggt1*^{dwg/dwg} mice were purchased from the Jackson Laboratory and Sprague Dawley rat P₀ litters were purchased from Charles River Laboratories. *Ccr2*^{RFP/RFP} mice⁵⁷ on C57BL/6 background (provided by I. F. Charo, Gladstone Institutes) were crossed with *Cx3cr1*^{GFP/GFP} mice⁵⁸ to generate *Cx3cr1*^{GFP/+} *Ccr2*^{RFP/+} mice. Mice were housed under Institutional Animal Care and Use Committee guidelines in a temperature and humidity-controlled facility with a 12 h light–12 h dark cycle and ad libitum feeding. All animal protocols were approved by the Committee of Animal Research at the University of California San Francisco (UCSF) and were in accordance with the National Institutes of Health (NIH) guidelines.

EAE. EAE was induced in 8- to 12-week-old female SJL/J, C57BL/6, NOD and *Cx3cr1*^{GFP/+} *Ccr2*^{RFP/+} mice as described^{59,63}. Mice were administered with 5 mg per kg body weight acivicin (Santa Cruz Biotechnology, dissolved at 1 mg ml⁻¹ in saline), 5 mg per kg GsTop (Tocris) or saline. Mice were randomly assigned to treatment groups, scored and drug-treated in a blinded manner. Mice that did not develop symptoms of EAE were not excluded from the analysis. Experimental groups were unblinded to treatment assignment at the end of the experiments. Mice were observed daily and clinical scores were assigned as follows by observers blinded to treatment: 0, no symptoms; 1, loss of tail tone; 2, ataxia; 3, hindlimb paralysis; 4 hindlimb and forelimb paralysis; and 5, moribund. EAE onset was defined by weight loss (>1 g) and first day of symptoms (score >0).

Tox-seq. Mice were perfused with ice-cold phosphate-buffered saline (PBS) and spinal cords were flushed out from the spinal column with PBS. Tissues were incubated in HBSS with 0.2% collagenase, type 3 (Worthington) gently shaking for 30 min at 37 °C and then mechanically dissociated and passed through a 40-μm strainer (Falcon). Cells were collected in complete RPMI-1640 medium (without phenol red supplemented with 25 mM HEPES (pH 7.4), 1% penicillin/streptavidin and 10% heat-inactivated fetal bovine serum (FBS; Thermo Fisher Scientific)) and myelin was depleted following the myelin removal beads II manufactures guidelines (Miltenyi Biotec). For the scRNA-seq experiment, myelin-depleted cell suspensions were treated for 5 min at 4 °C with Fc-block in BSA staining buffer (BD Biosciences) and then incubated for 30 min at 4 °C with CD11b APC-Cy7 (M1/70) antibodies. Live cells isolated from spinal cord were stained for intracellular ROS in vitro using membrane permeable, fluorescent reagent DCFDA (Abcam) as described²². For bulk RNA-seq, cells were incubated with 10 μM DCFDA in PBS supplemented with 2% FBS, 2 mM EDTA (Gibco) for 30 min at 37 °C and directly analyzed by flow cytometry. For scRNA-seq, to minimize cell activation and cell death, cells were incubated with 10 μM DCFDA in PBS supplemented with 2% FBS without EDTA at 4 °C for 30 min before cell sorting. Cells were incubated for 5 min at 4 °C with 1 μM Sytox blue live/dead stain and then sorted using FACSARIA II. Sorted cells were kept on ice until all samples were collected and then resuspended in cold PBS supplemented with 2% FBS at 233 cells μl⁻¹ and immediately processed for droplet-based scRNA-seq or bulk RNA-seq.

For scRNA-seq, 30 μl of each live Sytox blue⁺ CD11b⁺ ROS⁺ and live Sytox blue⁺ CD11b⁺ ROS⁺ sorted cell population from healthy and EAE spinal cords (clinical score of 1) were run on the 10x Genomics Chromium platform and libraries were prepared following manufactures instructions for the Chromium Single Cell 3' v2 Reagent kit. Balanced library pools were run across four lanes of an Illumina HiSeq4000 with a targeted sequencing depth of 100,000 reads per cell. Reads from each sample were aligned to the mm10 reference assembly using the 10x Genomics Cell Ranger Count v2.0.1 and then each sample was combined into one dataset using the 10x Genomics Cell Ranger Aggr package. The complete Cellranger sequencing depth and data summary analysis per sample is provided in Supplementary Table 1.

For bulk RNA-seq, CompBeads Compensation Particles (BD Biosciences) were used for color compensation controls. In each experiment, the maximal cell number of sorted microglia and macrophages was assessed based on CD11b (M1/70) and CD45 (30-F11) signal intensities (Supplementary Table 5). ROS⁺ (DCFDA) cells were gated based on FITC signals (cutoff 2 × 10³) and MHC II⁺ cells were gated based on PE-Cy7 signal (cutoff 3 × 10³) compared to the unstained cells. Microglia and macrophage subpopulations were classified into MHC II⁺ ROS⁺, MHC II⁺ ROS⁻ (baseline), MHC II⁺ ROS⁺ and MHC II⁺ ROS⁻. In each sorting experiment, eight distinct cell populations were collected separately on ice. After centrifugation at 300g and 4 °C for 6 min, cell pellets were stored at -80 °C in 150 μl of RLT buffer (Qiagen) with 1% 2-mercaptoethanol (Gibco) before RNA isolation. Total RNA was isolated using the RNeasy Plus Micro Kit (Qiagen) according to the manufacturer's instructions. Complementary DNA was generated from full-length RNA and uniformly sheared with the NuGEN Ovation RNA-seq V2 kit and Covaris S2 Sonicator, respectively. Libraries were purified using Agencourt XP magnetic beads and quantified by KAPA qPCR (Illumina). Four libraries per lane were pooled for a single-end 50-base-pair run on the Illumina HiSeq4000. FASTQ files were trimmed of known adaptors and low-quality regions of reads using Fastq-mcf⁵⁹.

Analysis of RNA-seq data. For scRNA-seq, the R toolkit Seurat²³ was used for quality control (QC) processing, graph-based clustering, visualizations and

differential gene expression analyses of scRNA-seq data and performed in R v.3.4.2. Cellranger Aggr aggregated datasets of 9,079 cells were filtered with QC parameters 200–5,000 nFeature, RNA per cell >5% and >25% mitochondrial and ribosomal genes, respectively. The percentage of mitochondrial (percent.mito) and ribosomal (percent.ribo) genes were regressed out. All remaining variable genes were used for downstream analyses, including immediate early response genes induced by cell isolation procedure²⁴. Following QC, 17,814 genes across 8,701 single cells were analyzed with Seurat v.3 default parameters unless otherwise stated (Extended Data 2c,d). To determine statistically significant principal components (PCs), JackStraw was performed with num.replicate of 100. For clustering analysis, FindNeighbors and FindClusters were used with the first 20 significant PCs and a resolution of 0.8, respectively. For subclustering analysis, Mp or Mg clusters in Fig. 1h, were separately re-clustered by running through the Seurat pipeline as described above. FindClusters was implemented at a resolution of 0.4 for Mp or resolution of 0.3 for Mg subcluster analysis. DEGs for each cluster were determined by FindAllMarkers with parameters min.pct, 0.25; log.fc.threshold, 0.25 using Wilcoxon statistical test. Genes that met the above criteria with adjusted *P* value <0.05 (Benjamini–Hochberg correction) were used for functional enrichment analysis. GO enrichment analysis of DEGs was performed in DAVID⁶⁰ and Metascape bioinformatic resources.

For bulk RNA-seq, sequence QC was assessed using FastQC and RSeQC. Reads were aligned to the mm9 mouse genome assembly using Tophat v.2.0.13, mapped reads were counted using featureCounts from Subread suite and then differential gene analysis was performed using edgeR⁶¹. The dataset was filtered by including all genes with minimum of two replicates with counts per million of between 0.5 and 5,000. The remaining genes were normalized using calcNormFactors weighted-trimmed mean of *M* values and the differential expression between samples was used to calculate *P* values in edgeR⁶². The R function 'p.adjust' was used to calculate the false discovery rate for each *P* value using the Benjamini–Hochberg method. GO Elite was used to identify DEGs that were overrepresented in existing annotated genes (Supplementary Table 6)⁶³. Clustering was performed by *k*-means clustering with 100 clusters on log-transform expression levels then by hierarchical ordered partitioning and collapsing hybrid⁶⁴ on the *k*-means clusters to prune highly similar clusters.

Coexpression clusters from enriched GO terms for bulk RNA-seq dataset.

Functional enrichment analysis of a dataset with 2,145 DEGs in ROS⁺ versus MHC II⁺ microglia was performed in Cytoscape³³ using the BiNGO plugin and GO annotations downloaded on 8 December 2016. Filtering for GO term results with <2,000 genes, 592 BP terms with a corrected *P* value <0.05 were found. GO term enrichment was also performed on the exclusive subsets of ROS-expressed genes (1,613) and MHC II-expressed genes (924), resulting in 58 and 783 filtered BP terms, respectively. From these GO term results, six were selected that represented processes of interest, maximum specificity (low total gene membership) and exclusive significance (non-overlapping terms). Interaction networks were constructed for each set of DEGs associated with these six terms using GeneMANIA⁶⁵. Default coexpression and physical interaction sources were selected from the network construction; the option to add a number of related genes was set to zero; all other settings were default values. The interaction data from GeneMANIA were imported into Cytoscape for visualization and data overlay. Coexpression clusters were defined as the largest connected set of either upregulated or downregulated genes and extracted as subnetworks.

Oxidative stress pathway modeling. A new oxidative stress pathway was constructed based on compiling information from the literature and existing pathway diagrams that included glutathione metabolism, redox, biosynthesis, uptake, breakdown, glutathionylation and acivicin inhibition. The γ-glutamyl cycle was simplified for clarity. PathVisio³¹ was used to construct the pathway model, which was deposited at WikiPathways (WP4466)⁶⁶ and then imported into Cytoscape for RNA-seq data overlay.

Preparation of fibrin plates for HTS. Fibrin-coated 384-well plates were prepared with an EL406 liquid handler (BioTek). Columns 1–22 received 30 μl of 2 U ml⁻¹ thrombin (Sigma-Aldrich) in a buffer of 20 mM HEPES (pH 7.4) and 14 mM CaCl₂, followed by 30 μl of 12 μg ml⁻¹ human plasminogen-free fibrinogen (EMD Millipore) in 20 mM HEPES (pH 7.4) in a final concentration of 6 μg ml⁻¹ fibrinogen. After incubation for 90 min in 37 °C to allow fibrin formation, plates were dried overnight in a 37 °C incubator equipped with fans to circulate the air.

Image-based HTS of small molecule inhibitors of microglia activation. Primary rat microglia were isolated and cultured in the presence of heat-inactivated Performance Plus FBS (Thermo Fisher Scientific) as described previously^{18,67}. FBS was used to obtain a sufficiently high yield of microglia that was required for the HTS of 2,000 compounds. Because microglia activation can be influenced by culture conditions^{18,67}, FBS was batch-tested with three QC criteria: high cell yield, no effect on morphologic activation at baseline and response to LPS-induced morphologic activation by at least 50%. Microglia HTS was performed in 384-well PDL-coated plates (Greiner). To screen for compounds that inhibited fibrin-activated microglia, 50 μl of DMEM containing 10% FBS was added to the

fibrin-coated plate using an EL406 liquid dispenser-aspirator (Biotek). Fibrin induced 50–80% morphologic microglia activation, depending on plating conditions. Inhibition of microglia activation by selected compounds was also performed using soluble fibrin⁶⁸. To screen for inhibitors of LPS-activated microglia, 50 μ l of 1 ng ml⁻¹ LPS (Sigma-Aldrich) was added to the well. A library of 1,907 clinical drugs and bioactive compounds, compiled by the Small Molecule Discovery Center at UCSF, was screened at 10 μ M. A total of 100 nl of each compound (10 mM stock solution in DMSO) was added using a Biomek FXP automated laboratory workstation (Beckman Coulter) outfitted with a 50-nl Pin Tool (V&P Scientific). Columns 1 and 2 contained DMSO-treated control cells (defining maximal activation/0% inhibition); columns 3–22 contained test compounds and columns 23 and 24 contained unstimulated control cells (defining minimal activation/100% inhibition). A total of 3,000 microglia cells were added to each well in 50 μ l of DMEM containing 10% FBS, giving a final compound concentration of 10 μ M in 0.1% DMSO. Assay plates were incubated at 37 °C, 5% CO₂ for 48 h. Using the EL406 liquid dispenser-aspirator, cells were then fixed with 4% paraformaldehyde solution, permeabilized with 0.1% Triton-X100 and stained with 0.5 μ g ml⁻¹ CellMask Red (Thermo Fisher Scientific) and 2 μ g ml⁻¹ Hoechst nuclear dye (Thermo Fisher Scientific) with PBS washes between steps. The plates were stored in PBS for readout by imaging.

To measure microglia activation, assay plates were imaged using an INCell Analyzer 2000 automated fluorescent microscope (GE Healthcare) equipped with a $\times 10$ objective and excitation/emission filter pairs of 350 nm/455 nm (Hoechst dye) and 579 nm/624 nm (CellMask Red). Images were analyzed with the INCell Developer Toolbox feature extraction software (GE Healthcare). Cell nuclei stained with Hoechst dye were segmented using a 'nuclear' segmentation method, with a minimum target area of 30 μ m² and sensitivity of 75%. Exclusion criteria for cell segmentation was set to intensity <120 units or area >1,000 μ m². CellMask Red staining and criteria for the identification of activated microglia were as described⁹. The number of activated microglia was divided by the total number of cells in the well to yield a fraction of activation and then normalized to the stimulated/untreated wells (columns 1 and 2) and unstimulated wells (columns 23 and 24) to determine the percentage of inhibition of microglia activation. Similarly, the percentage of dead cells was calculated by comparing the fraction of dead cells in a well to the stimulated and unstimulated controls. For each assay plate, Z' values were calculated as described previously⁷. The average Z' value was 0.5 for the six fibrin screening plates and 0.63 for the six LPS screening plates.

Active compounds were defined as having cell toxicity to <3% and inhibiting activation by >50% in either LPS or fibrin-treated plates. The 50% inhibition cutoff value was set as three s.d. from the mean of untreated control. Active compounds were reconfirmed in dose-response assays conducted in triplicates of ten concentrations, with threefold serial dilutions ranging from 0.001 μ M to 20 μ M. IC₅₀ values were estimated from normalized percentage inhibition values, using four-parameter nonlinear regression analysis (GraphPad Prism).

ROS detection. BMDM and peripheral blood mononuclear cell culture and ROS detection using DHE were performed as described^{9,68}. For GGT inhibition, cells were preincubated with 5 μ M acivicin or GGTsTop for 1 h, plated on fibrin-coated plates for 24–48 h and then fixed with 4% PFA for 10 min. PBS was used as vehicle control.

GGT activity assay. GGT activity was measured using the MaxDiscovery GGT Enzymatic Assay kit (Bio Scientific) according to the manufacturer's protocol. BMDMs were preincubated for 1 h with 10 μ M acivicin before plating cells on 25 μ g ml⁻¹ fibrin-coated six-well culture plates. For in vivo GGT activity assay, spinal cord tissues from peak disease of MOG_{35–55} EAE or LPS-injected SN area at 12 h were prepared. Tissues were homogenized in 0.1 M Tris-HCl and centrifuged at 13,000g for 30 min at 4 °C. The supernatant was collected and assessed for GGT activity by measuring the absorbance at 405 nm with a microplate reader as described above. The GGT activity in IU l⁻¹ was calculated following the manufacturer's protocol by multiplying the average increase in absorbance at 405 nm over 10 min. GGT activity was also measured with fluorescent probe, ProteoGREEN-gGlu (Goryo Chemical), according to the manufacturer's protocol. BMDMs were plated on 96-well, black μ -clear-bottom microtiter plates (Greiner Bio-One) precoated with 25 μ g ml⁻¹ fibrin. BMDMs were incubated with ProteoGREEN-gGlu with acivicin or GGTsTop (diluted at threefold concentrations from 0.01 μ M to 8.3 μ M). The fluorescence intensity (excitation/emission filter pairs of 488 nm/520 nm) was measured using a microplate reader as described above.

Real-time imaging of glutathione. Real-time GSH dynamics in living BMDMs were determined with the fluorescent GSH probe, RealThiol AM (RT-AM) as described³⁷. Briefly, cells were plated on two-well chamber Nunc slides precoated with 25 μ g ml⁻¹ fibrin with or without 5 μ M acivicin or GGTsTop. BSO (Sigma-Aldrich) was used as positive control for reducing intracellular GSH at 100 μ M. Cells were kept at 37 °C during the experiment. After 24 h incubation, cells were loaded with 1 μ M RT-AM probe for 5 min then fluorescence emissions after sequential excitation at 405 nm and 488 nm was acquired using sequential confocal laser scanning microscopy (Olympus FV1000; Olympus) with a $\times 10$ objective

and $\times 2$ optical magnification. For each independent experiment, laser power and detector settings were set using the control/untreated cells incubated with RT-AM alone and then all settings were kept constant throughout the experiment. The ratio bound intracellular RT-AM/unbound intracellular RT-AM for each treatment condition was calculated by subtracting the 488-nm fluorescence signal from the 405-nm fluorescence signal from 30–50 cells per treatment for each independent experiment. The ratio calculated for each treatment was expressed as percentage from that of the untreated cells (control).

Quantitative real-time PCR. Total RNA was isolated from BMDMs or spinal cord tissues using the RNAeasy Mini kit (Qiagen) according to the manufacturer's instructions. cDNA was prepared with High Capacity cDNA Reverse Transcription kit (Applied Biosystems). SYBR green-based qPCR was performed using murine primers to *Cxcl10*, *Nos2*, *Cxcl3*, *Ccl5*, *Il1b* or *Il12b*. Results were analyzed with Opticon 2 software and the comparative CT method. Gene expression was normalized to *Gapdh* and presented as fold change relative to control.

Immunohistochemistry. Spinal cords were processed as described^{9,29,30,68,69}. The following antibodies were used: mouse anti-gp91 (CYBB, 1:200 dilution; 53, BD Biosciences), mouse anti-iNOS (1:500, 610329, BD Biosciences), rabbit anti-Iba-1 (1:1,000 dilution; 019-19741, Wako), rat anti-MHC II (1:300 dilution; M5/114.15.2, Thermo Fisher Scientific), rabbit-coagulation factor X (F10; NBPI-33320, NOVUS), mouse anti-CLEC4E (1:700 dilution; AT16E3, Abcam), mouse anti-neurofilament H nonphosphorylated (1:100 dilution; SMI-32, BioLegend), mouse anti-MBP (1:100 dilution; SMI-99, BioLegend), rabbit polyclonal anti-GGT1 (1:100 dilution; SAB2701966, Sigma) or goat polyclonal anti-4-HNE (1:200 dilution; ab46544, Abcam) and Alexa 647, 488, 405 (1:500 dilution; Jackson ImmunoResearch) and the Vector-Red and Vector-Blue alkaline phosphatase substrate kit (Vector Labs) for detection. Sections were stained with DAPI (1:1,000 dilution, Thermo Fisher Scientific) for 3 min at 23 °C room temperature. For mouse primary antibodies, the Mouse on Mouse kit (Vector Labs) was used according to the manufacturer's protocol. Analysis was based on an established method of neuropathology for sampling multiple spinal cord sections and comparing similar anatomical regions as described^{69–71}. Images were acquired with an Axioplan II epifluorescence microscope (Zeiss) equipped with Plan-Neofluar objectives (10 \times 0.3 NA, 20 \times 0.5 NA or 40 \times 0.75 NA) or all-in-one BZ-X700 fluorescence microscope (Keyence), Fluoview FV1000 (Olympus) confocal microscope and Fluoview software v.3.1b with Olympus $\times 40$ and 0.8 NA water-immersion lens as described⁹ or Aperio Versa scanner (Leica) with Aperio Imagescope 12.4 and $\times 1.25$, $\times 10$ and $\times 20$ lenses. Images of similar anatomical locations were quantified using NIH ImageJ (v.1.50) by observers blinded to experimental conditions.

Flow cytometry. Single-cell suspensions were incubated with Fc receptor-blocking anti-CD16/CD32 antibodies (2.4G2) for 15 min at 4 °C. Cell suspensions were stained with surface fluorescent-conjugated antibodies for 30 min at 4 °C. The following antibodies were used: CD3 (17A2), CD4 (GK1.5), CD8 (53-6.7), CD62L (MEL-14), CD44 (1M7), CD25 (3C7), CD11b (M1/70), CD45 (30-F11) and MHC II (M5/114.15.2). For surface labeling of GGT1, unconjugated mouse monoclonal anti-GGT1 (1:100 dilution; ab55138, Abcam) was incubated with surface markers for 1 h at 4 °C. Then FITC-conjugated species-specific secondary antibody (1:100 dilution) was added for 1 h at 4 °C. For intracellular staining of IFN- γ and IL-17A, T cells were stimulated for 4 h with Cell Activation Cocktail (BioLegend). Cells were then fixed with Cytofix/Cytoperm solution (BD Bioscience) and stained with antibodies to IL-17A (TC11-18H10.1) or IFN- γ (XMG1.2). Foxp3 (FJK-16S) staining was performed according to the manufacturer's protocol (eBioscience). Cells were analyzed by flow cytometry on an LSRII (BD Biosciences) with FlowJo software (Tree Star). Antibodies were purchased from BioLegend, BD Biosciences or eBioscience and were used at 1:300 dilution unless stated otherwise.

Blood sampling and hematological analysis. Hematological analysis was carried out for mice treated with saline or acivicin for 10 d. Blood samples were collected from the heart of each anesthetized mouse via cardiac puncture. The complete blood cell counts were measured with an automated blood count analyzer (Hemavet, Drew Scientific).

Protein carbonyl content assay. Blood was isolated from EAE mice via terminal cardiac puncture and serum levels of protein carbonylation were measured with OxiSelect Protein Carbonyl ELISA (Cell Biolabs) according to the manufacturer's protocol. The absorbance at 450 nm was measured using a SpectraMax M5 microplate reader as described above.

T cell proliferation assay. Naive CD4⁺ T cells were magnetically sorted from TCR-transgenic D2D mice using naive CD4⁺ T cell isolation kit (Miltenyi Biotec). BMDMs were incubated with 5 μ M acivicin, primed with MOG_{35–55} peptide (10 μ g ml⁻¹) and then stimulated with LPS (10 ng ml⁻¹) for 24 h. CD4⁺ T cells were cultured with MOG_{35–55} peptide primed BMDMs for 3 d and 5-bromodeoxyuridine (BrdU) incorporation was assessed as described previously⁶⁸. For non-antigen-specific T cell proliferation, naive CD4⁺ T cells were treated with acivicin and stimulated with mouse T activator CD3/CD28 Dynabeads (Thermo Fisher

Scientific) for 3 d. Cells were fixed, permeabilized and stained with FITC-conjugated anti-BrdU (BrdU flow kits, BD Biosciences). Cells were analyzed with LSRII as described above.

Stereotactic LPS injection and drug treatment. Mice were anesthetized with isoflurane and placed in a stereotactic apparatus (David Kopf Instruments). LPS (Sigma-Aldrich) stock was dissolved in endotoxin-free distilled water (HyClone) and further diluted to $1 \mu\text{g ml}^{-1}$ with PBS. LPS ($2 \mu\text{l}$ of $1 \mu\text{g ml}^{-1}$) or PBS was injected at $0.3 \mu\text{l min}^{-1}$ using a 10- μl Hamilton syringe attached to a 33-G needle into the SN at coordinates anteroposterior, 3.0 mm; mediolateral, 1.3 mm; dorsoventral, 4.7 mm from the bregma, according to Paxinos and Watson. Animals received acivicin (5 mg per kg) or saline intraperitoneally beginning 5 d before LPS injection and were then killed 12 h or 7 d after LPS injection for GGT activity assay or immunohistochemistry, respectively. For GGT activity, samples were collected on ice and stored at -80°C until analysis. For immunohistochemistry, animals were processed as described above and 30- μm coronal brain sections were stained with antibodies to tyrosine hydroxylase (1:2,000 dilution; P40101, Pel Freez) and Iba-1 (1:1,000 dilution; 019-19741, Wako). Images were acquired with all-in-one BZ-X700 fluorescence microscope as described above.

Statistical analyses. Statistical analyses were performed with GraphPad Prism (v.7). Data are presented as mean \pm s.e.m. No statistical methods were used to predetermine sample size, but sample sizes are similar to those reported previously. Statistical significance was determined with two-tailed unpaired Student's *t*-test, accumulative hypergeometric test with Benjamini-Hochberg correction, Wilcoxon two-tailed test, nonparametric two-tailed Mann-Whitney *U*-test or a one-way or two-way ANOVA followed by Bonferroni, Sidak's or Tukey's post hoc test (multiple comparisons). Mice were age- and sex-matched and were randomly assigned to experimental groups. The assignment of EAE clinical scores, histopathological analysis and quantification were conducted in a blinded manner. The statistical significance of changes in the mean clinical score for each day of the EAE experiment was estimated using permutation tests⁹.

Reporting Summary. Further information on research design is available in the Nature Research Reporting Summary linked to this paper.

Data availability

The scRNA-seq and bulk RNA-seq data files are available in the Gene Expression Omnibus database under SuperSeries accession code GSE146295. A searchable web resource for the scRNA-seq data is available at https://toxseq.shinyapps.io/scrnaseq_viewer/ and associated source code at <https://github.com/gladstone-institutes/BC-AM-1148>. The oxidative stress pathway model is available at WikiPathways: <https://www.wikipathways.org/instance/WP4466>. All data generated and analyzed in this study are available within the paper. Any additional data can be made available from the corresponding author upon reasonable request.

References

- Saederup, N. et al. Selective chemokine receptor usage by central nervous system myeloid cells in CCR2-red fluorescent protein knock-in mice. *PLoS ONE* **5**, e13693 (2010).
- Jung, S. et al. Analysis of fractalkine receptor CX₃CR1 function by targeted deletion and green fluorescent protein reporter gene insertion. *Mol. Cell. Biol.* **20**, 4106–4114 (2000).
- Aronesty, E. ea-utils: command-line tools for processing biological sequencing data. (2011); <https://github.com/ExpressionAnalysis/ea-utils>
- Huang da, W., Sherman, B. T. & Lempicki, R. A. Systematic and integrative analysis of large gene lists using DAVID bioinformatics resources. *Nat. Protoc.* **4**, 44–57 (2009).
- Robinson, M. D., McCarthy, D. J. & Smyth, G. K. edgeR: a Bioconductor package for differential expression analysis of digital gene expression data. *Bioinformatics* **26**, 139–140 (2010).
- Robinson, M. D. & Oshlack, A. A scaling normalization method for differential expression analysis of RNA-seq data. *Genome Biol.* **11**, R25 (2010).
- Zambon, A. C. et al. GO-Elite: a flexible solution for pathway and ontology over-representation. *Bioinformatics* **28**, 2209–2210 (2012).
- Van der Laan, M. J. & Pollard, K. S. A new algorithm for hybrid clustering of gene expression data with visualization and the bootstrap. *J. Stat. Plan. Inference* **117**, 275–303 (2003).
- Zuberi, K. et al. GeneMANIA prediction server 2013 update. *Nucleic Acids Res.* **41**, W115–W122 (2013).
- Kutmon, M. et al. WikiPathways: capturing the full diversity of pathway knowledge. *Nucleic Acids Res.* **44**, D488–D494 (2016).
- Butovsky, O. et al. Identification of a unique TGF- β -dependent molecular and functional signature in microglia. *Nat. Neurosci.* **17**, 131–143 (2014).

- Ryu, J. K. et al. Blood coagulation protein fibrinogen promotes autoimmunity and demyelination via chemokine release and antigen presentation. *Nat. Commun.* **6**, 8164 (2015).
- Adams, R. A. et al. The fibrin-derived $\gamma^{377-395}$ peptide inhibits microglia activation and suppresses relapsing paralysis in central nervous system autoimmune disease. *J. Exp. Med.* **204**, 571–582 (2007).
- Akassoglou, K. et al. Oligodendrocyte apoptosis and primary demyelination induced by local TNF/p55TNF receptor signaling in the central nervous system of transgenic mice: models for multiple sclerosis with primary oligodendroglialopathy. *Am. J. Pathol.* **153**, 801–813 (1998).
- Akassoglou, K. et al. Fibrin depletion decreases inflammation and delays the onset of demyelination in a tumor necrosis factor transgenic mouse model for multiple sclerosis. *Proc. Natl Acad. Sci. USA* **101**, 6698–6703 (2004).

Acknowledgements

We thank F. Quintana for sharing the NOD EAE protocol, I. Kathiriyai for advice on scRNA-seq and the Gladstone Flow Cytometry (M. Cavois, M. Maiti and N. Raman) and Genomics Cores (R. Chadwick, J. McGuire, Y. Hao and N. Carli) for expert technical assistance with flow cytometry, library preparations and sequencing. We thank S. Zeitlin and S. Chen for helpful advice and testing of cell-imaging algorithms, S.J. Won and R. Swanson for advice, B. Cabrita for technical assistance, G. Maiti for graphics and K. Claiborn for editorial assistance. B.G.B. acknowledges support from Younger Family Fund, Jr. S.S.Z. is supported by research grants from the NIH (R01 AI131624, R01 NS092835, R21 NS108159), the National Multiple Sclerosis Society (NMSS) (RG1701-26628; RG-1801-29861), Race to Erase MS, the Weill Institute and the Maisin Foundation. J.W. is supported by NIH/NIGMS R01 GM115622. A.R.P. and K.H. are supported by NRRB NIH/NIGMS P41 GM103504. This research was supported by NMSS Postdoctoral Fellowships FG 1944-A-1, FG-1507-05496 and FG-1708-28925 to S.B., J.K.R. and A.S.M., respectively; the German Research Foundation (DFG) postdoc fellowship to S.B.; UCSF Immunology NIH/NIAID T32 AI007334 to A.S.M.; NIH/NINDS F32 NS096920 to V.A.R.; Race to Erase MS Young Investigator Award and American Heart Association Scientist Development Grant 16SDG30170014 to J.K.R.; the FastForward/NMSS grant to K.A. and M.R.A., the Ray and the Dagmar Dolby Family Fund, the Simon Family Trust, Conrad N. Hilton Foundation (17348) and NIH/NIA RF1 AG064926 and NIH/NINDS R35 NS097976 to K.A.

Author contributions

A.S.M., J.K.R., S.B. and A.M.-F. performed and designed experiments and analyzed data; A.S.M. performed sc-Tox-seq and analyzed scRNA-seq data; J.K.R. performed target identification and validation in vitro and in vivo; S.B. developed the ROS-labeling protocol and performed bulk Tox-seq. A.S.M., R. Thomas, S.T. and A.W. performed bioinformatics analysis. A.M.-F., K.K.A., S.J.P., J.K.R., K.M.B., M.R.M., C.B. and C.W. performed microglia assay development and HTS; M.A.Pe., R. Tognatta, J.K.R. and A.S.M. performed immunohistology; A.S.M. and J.K.R. performed FACS; M.M. performed GSH live-cell imaging assays; X.J. and J.W. provided reagents and analyzed data; P.E.R.C., R.M.-A. and Z.Y. conducted image analysis; A.R.P. and K.H. performed pathway modeling and network analysis; M.A.Pl. and A.J.G. analyzed data; V.A.R., A.R.P., S.S.Z., B.G.B. and M.R.A. designed experiments and analyzed data; K.A. conceived the project, designed the study, designed experiments and analyzed data; A.S.M., J.K.R., S.B. and K.A. wrote the manuscript with input from all authors. All authors contributed to critical review of the manuscript.

Competing interests

K.A. is a co-founder and scientific advisor of Therini Bio. K.A., A.M.-F. and J.K.R. are co-inventors on the J. David Gladstone Institutes' patent US10,451,611 and pending patent applications US 16/572,365 and EP 15735284.05, covering in vitro fibrin assays. K.A. and J.K.R. are co-inventors on the J. David Gladstone Institutes' application PCT/2018/052694, covering methods to inhibit neurodegeneration, K.A., M.R.A., K.K.A., A.M.-F. and C.W. are co-inventors on the J. David Gladstone Institutes' and the Regents of the University of California's pending patent applications US 15/943,474 and EP 15735033.1, covering assays for inhibition of microglia activation. Their interests are managed in accordance with their respective institutions' conflict of interest policy.

Additional information

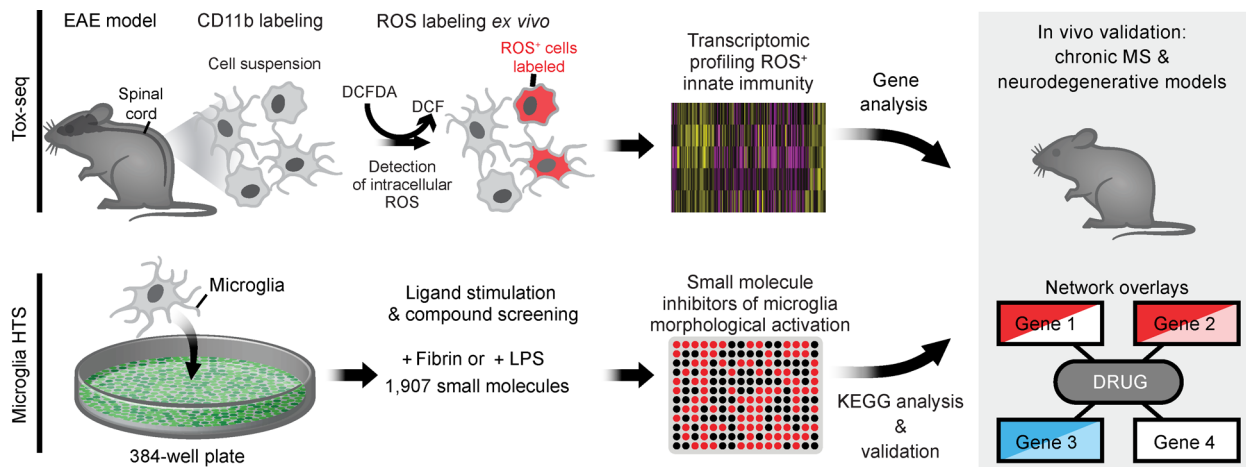
Extended data is available for this paper at <https://doi.org/10.1038/s41590-020-0654-0>.

Supplementary information is available for this paper at <https://doi.org/10.1038/s41590-020-0654-0>.

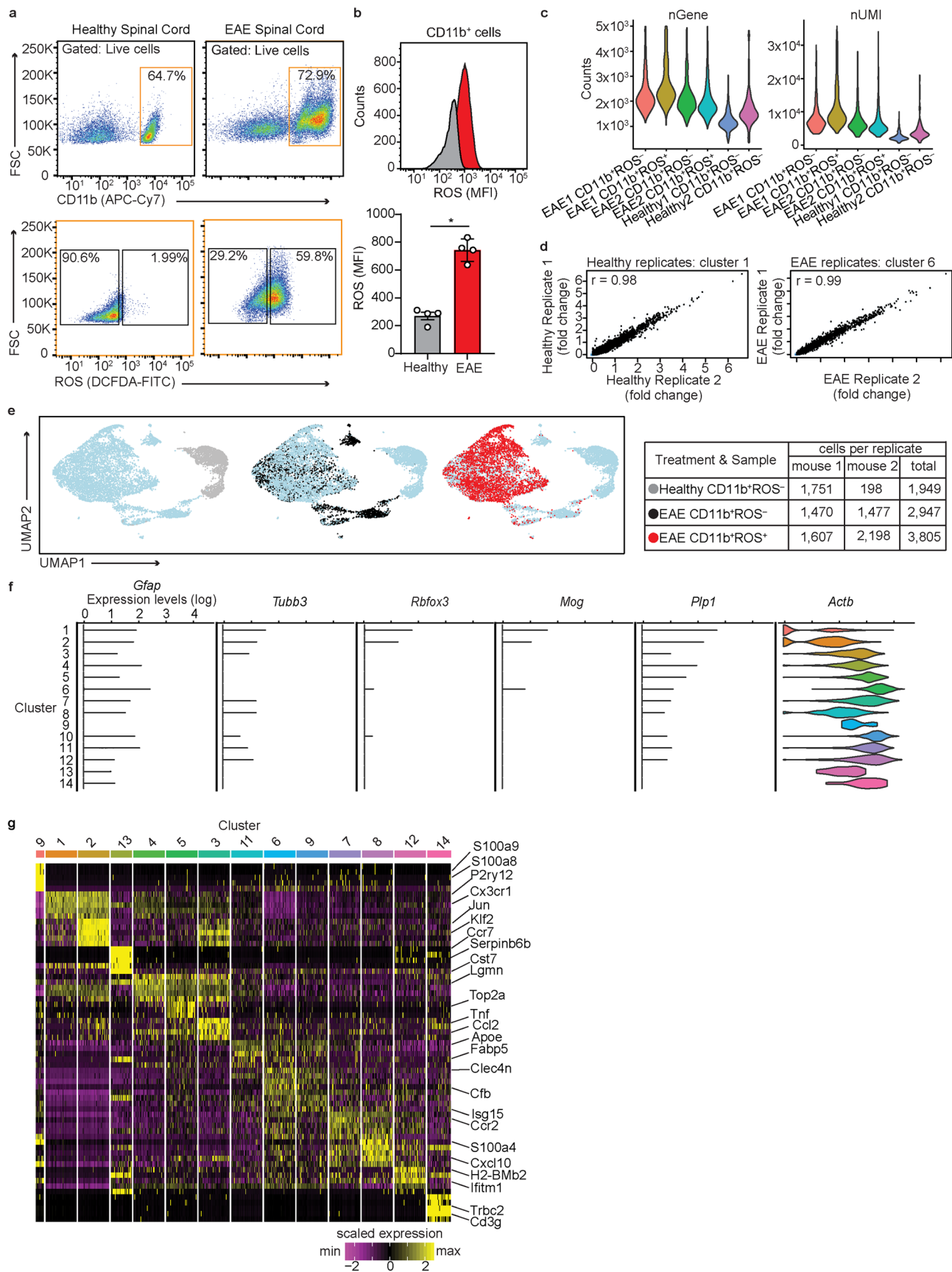
Correspondence and requests for materials should be addressed to K.A.

Peer review information L. A. Dempsey was the primary editor on this article and managed its editorial process and peer review in collaboration with the rest of the editorial team.

Reprints and permissions information is available at www.nature.com/reprints.

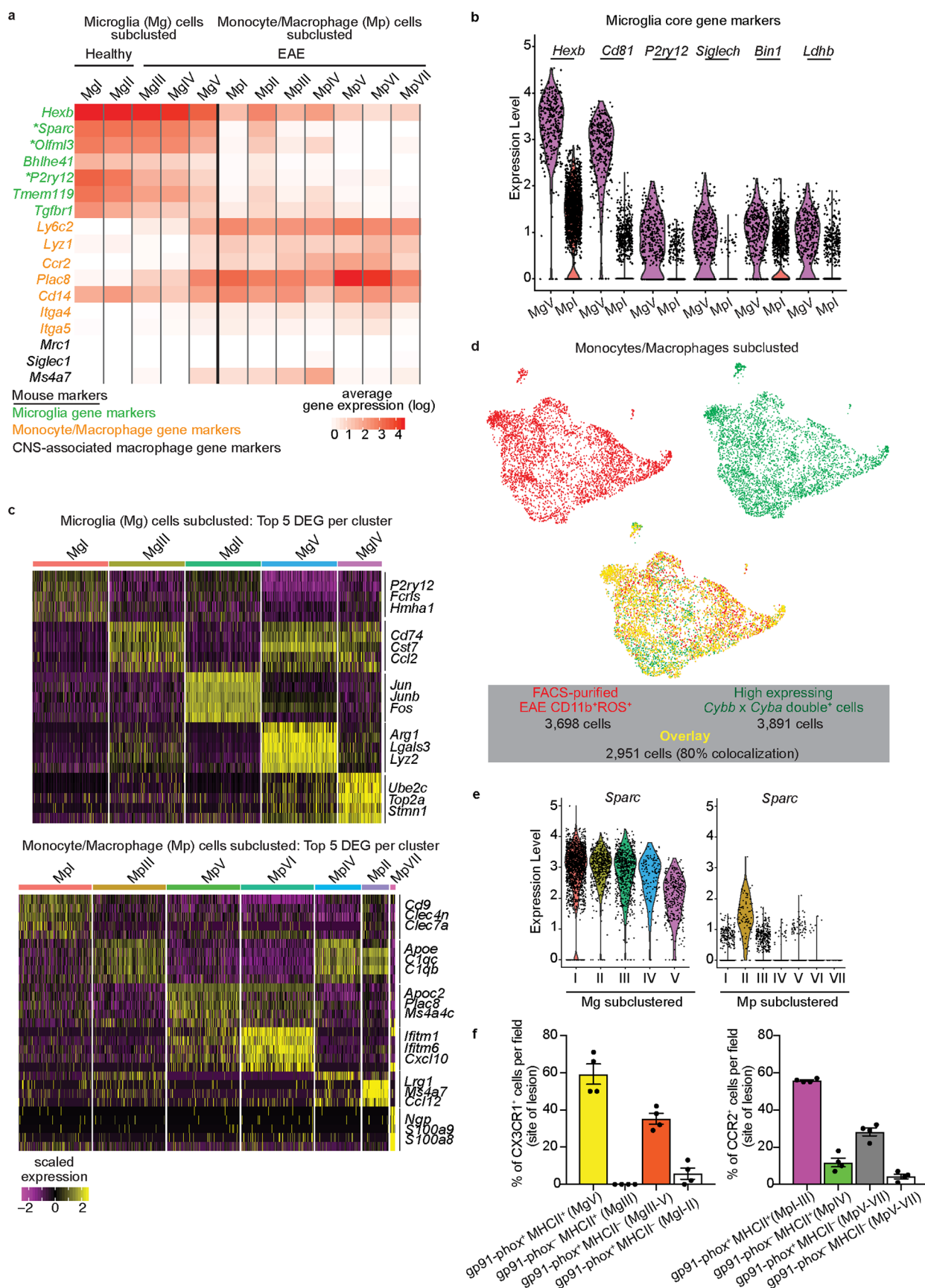


Extended Data Fig. 1 | Tox-seq and HTS schematic. Tox-seq workflow and microglia HTS followed by in vivo validation and drug gene target network analysis.



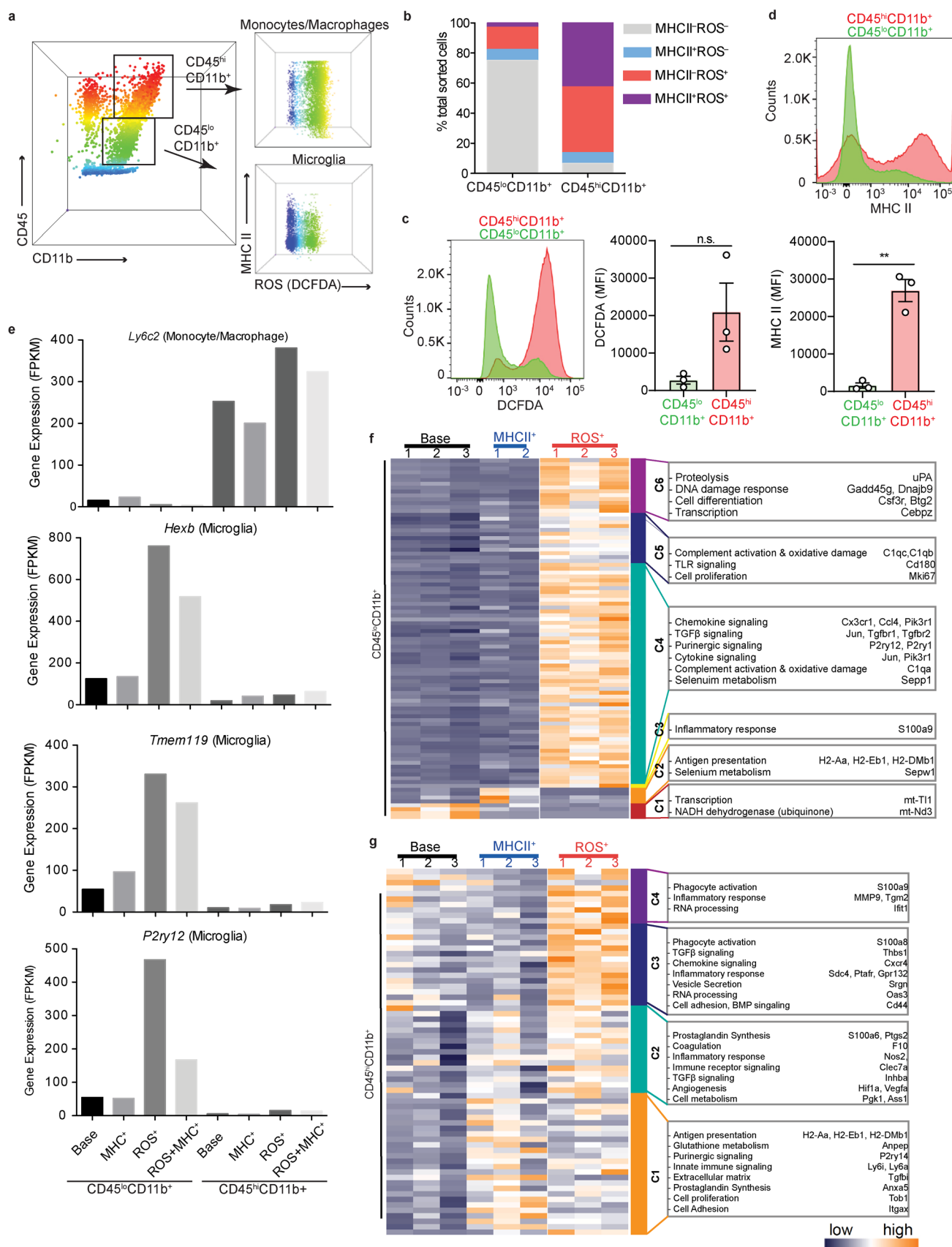
Extended Data Fig. 2 | See next page for caption.

Extended Data Fig. 2 | Validation of single cell oxidative stress transcriptome of CNS innate immunity. **a**, Flow cytometry plots of live CD11b⁺ROS⁻ and live CD11b⁺ROS⁺ cells from spinal cord of individual healthy and EAE mice. Cell population (%) is shown inside gate. Data are representative of two independent experiments with similar results. **b**, Representative histogram plots (top) and quantification of mean fluorescence intensity (MFI, bottom) of ROS production (assessed via DCFDA) in CD11b⁺ cells from healthy and EAE mice. Data are from $n=4$ mice per group (**a**, **b**) (mean \pm s.d.). $*P < 0.05$ (two-tailed Mann-Whitney test). **c**, Violin plots of number (n) Gene (nGene) and unique molecular identifiers (nUMI) post-normalization and shown for each biological replicate for scRNA-seq. Data are from $n=2$ mice per group. **d**, Correlation gene expression scatter plot between healthy (left) or EAE (right) biological replicates from scRNA-seq. Data are from $n=2$ healthy and 2 EAE mice depicted as the average gene expression for cluster 1 ($n=14,927$ and 12,861 genes for healthy replicate 1 and 2 respectively) and cluster 6 ($n=11,856$ and 14,319 genes for EAE replicate 1 and 2 respectively) with Pearson correlation coefficients $r=0.98$ and 0.99 , respectively. **e**, UMAP plots (left) of each cells sample type and summarized in table (right). **f**, Violin plots of log expression levels of potential astrocytic (*Gfap*), neuronal (*Tubb3* and *Rbfox3*), oligodendrocyte (*Mog* and *Plp1*) contaminants in each cluster. Violin plots depict minima and maxima expression levels (14 clusters; $n=8,701$ cells from spinal cord of 2 healthy and 2 EAE mice). Genes shown were not differentially expressed. *Actb* is shown as a reference gene. **g**, Heat map of top 5 DEGs per single cell cluster. The clusters are ordered by unsupervised hierarchical clustering. Key indicates scaled z-score expression.



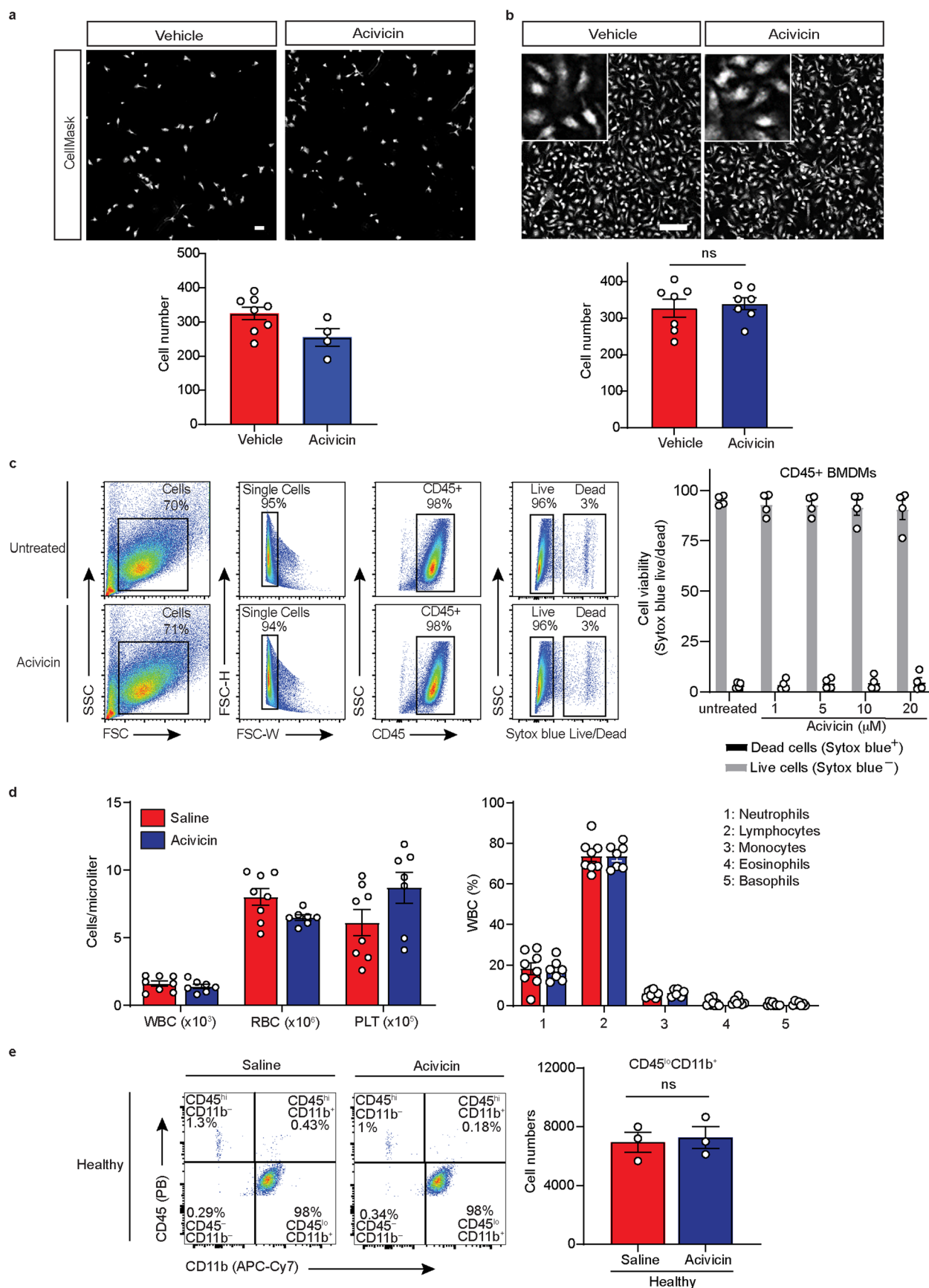
Extended Data Fig. 3 | See next page for caption.

Extended Data Fig. 3 | CNS innate immune populations and comparison with canonical myeloid gene signatures. **a**, Heat map of oxidative stress subclustered populations from Tox-seq analyzed for select microglia (green text)^{19,20}, monocyte/macrophage (orange text)^{20,25,26}, and CNS-associated macrophage (black text)²⁰ gene markers. Key indicates average gene expression (log scale). Asterisk indicates genes previously validated by cell-fate mapping²⁰. **b**, Violin plots from Tox-seq clusters MgV and Mpl showing single-cell gene expression levels of highly-conserved microglia core genes²⁷. Violin plots depict minima and maxima with points showing single cell expression levels. Data are from $n=2$ mice per group. **c**, Heat maps of top 5 DEGs across microglia (top) or monocytes/macrophages (bottom) single cell subclusters. Key indicates scaled z-score gene expression. **d**, UMAP plots of monocytes/macrophages subclustered and colored based on FACS-purified EAE CD11b⁺ROS⁺ cells (red dots), high expressing NADPH oxidase (*Cybb*⁺ x *Cyba*⁺) cells (green dots), and overlay between the two populations (yellow dots). The percent colocalization between the number of FACS-purified EAE CD11b⁺ROS⁺ and high expressing NADPH oxidase cells is shown in key. **e**, Violin plots of log expression levels of *Sparc* across all microglia (Mg) and monocyte/macrophage (Mp) clusters. Violin plots depict minima and maxima with points showing single cell expression levels. Data are from $n=2$ healthy and 2 EAE mice. **f**, Confocal microscopy quantification related to Fig. 3g, and presented as percent CX3CR1⁺ and CCR2⁺ cells colocalized with gp91-phox and MHC II in spinal cord sections from *Cx3cr1*^{GFP/+}:*Ccr2*^{REP/+} mice with MOG₃₅₋₅₅-induced EAE. $n=4$ mice per group (means \pm s.e.m.). Each symbol (**f**) represents an individual mouse.



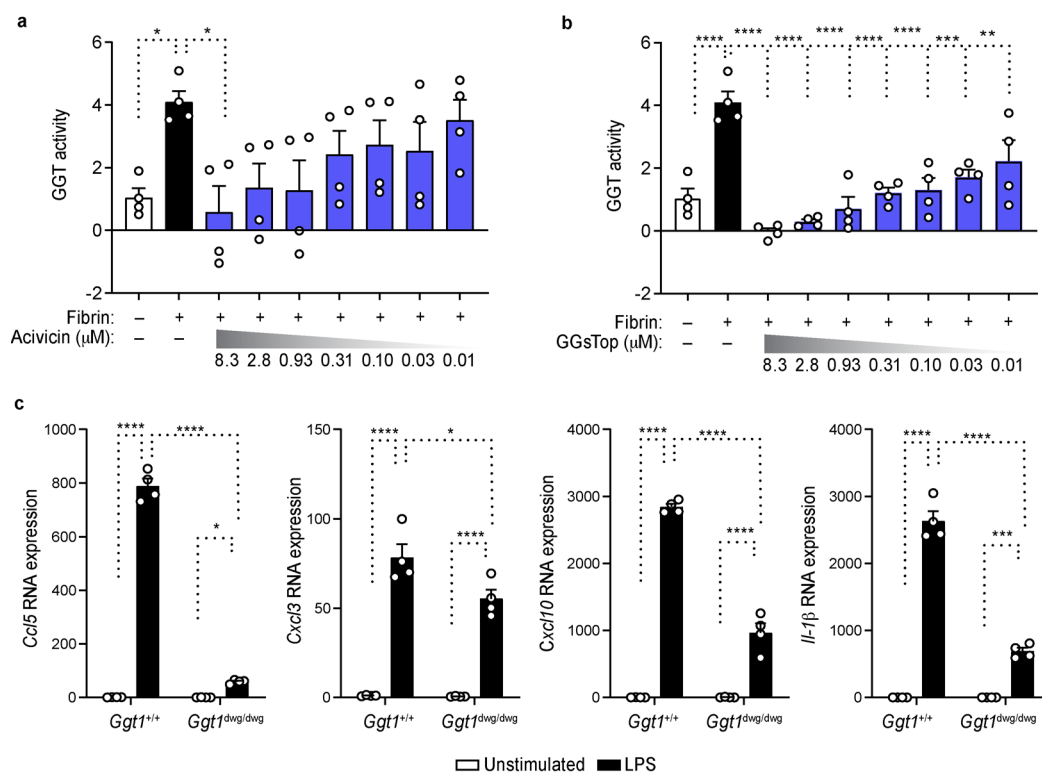
Extended Data Fig. 4 | See next page for caption.

Extended Data Fig. 4 | Bulk RNA-seq of ROS⁺ and MHC⁺ CNS innate immune cells. **a**, Representative flow cytometry plots of CD45^{lo}CD11b⁺ (microglia) and CD45^{hi}CD11b⁺ (monocytes) cells sorted based on MHC II and ROS production (assessed via DCFDA) from EAE spinal cord. Data are representative of $n = 3$ independent experiments with similar results. **b**, Cell percentages of sorted microglia and monocytes populations. Data are from $n = 3$ independent experiments with 5 spinal cord EAE tissues pooled per experiment. **c**, **d**, Quantification of MFI of ROS production (assessed via DCFDA) (**c**) and MHC II (**d**) expression in CD45^{lo}CD11b⁺ and CD45^{hi}CD11b⁺ cells. Data are from $n = 3$ experiments (mean \pm s.e.m.) ** $P = 0.0011$, n.s., not significant $P = 0.080$ (two-tailed unpaired t-test). Each symbol represents an individual mouse. **e**, Gene expression (FPKM) profiles of select microglia and monocyte/macrophage markers across each sorted population. Base, MHCII⁺ROS⁻ cells. **f**, Heat map of bulk RNA-seq cluster analysis from CD45^{lo}CD11b⁺ cells. Six gene clusters (C1-6) were annotated with functions for selected genes based on expression levels. **g**, Heat map of bulk RNA-seq cluster analysis from CD45^{hi}CD11b⁺ cells. Four gene clusters (C1-4) were annotated with functions for selected genes based on expression levels. Key indicates normalized z-score expression.

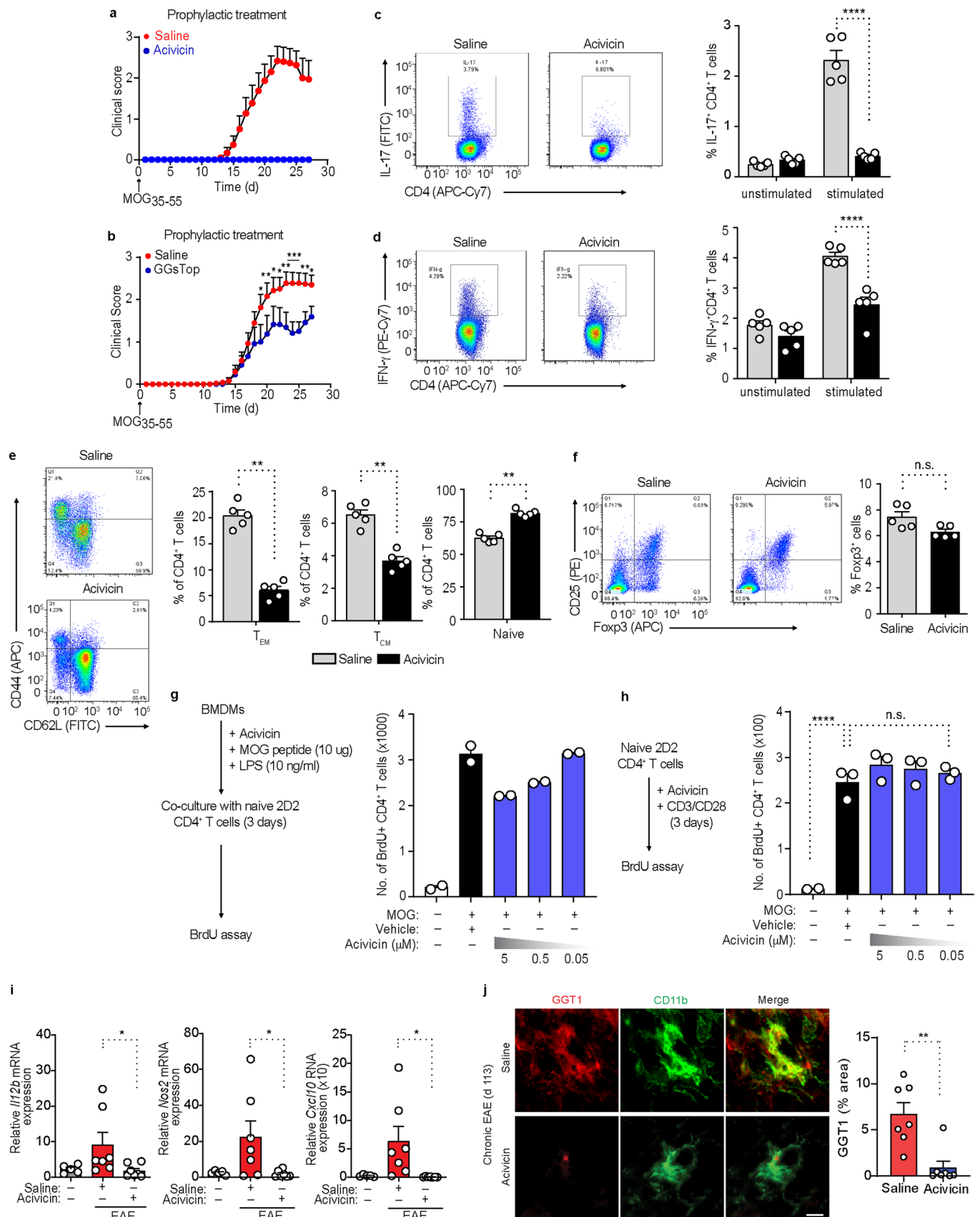


Extended Data Fig. 5 | See next page for caption.

Extended Data Fig. 5 | Effects of acivicin on microglia, macrophage and whole blood cell numbers. **a**, Representative images showing morphology and density of primary microglia treated with vehicle or acivicin for 48 h stained with nuclei marker Hoechst or CellMask Red Whole Cell Stain. Quantification of the total number of microglia. Data are representative of one experiment with technical replicates (open symbols). Scale bar, 100 μm . **b**, Representative confocal images showing morphology and density of vehicle- and acivicin-treated BMDMs treated for 24 h. Scale bar, 100 μm . Insets depict digitally zoomed in regions of interest. Quantification of the total number of BMDMs in the field of view. Data are from $n = 7$ independent experiment. **c**, Representative flow cytometric plots of gating strategy for BMDMs treated with acivicin for 24 h or left untreated. Cell viability of single CD45⁺ cells was assessed by Sytox blue live/dead nuclei stain. Quantification of percent cell viability of BMDMs treated with acivicin or left untreated. Data are from $n = 2$ independent experiments with $n = 4$ mice per group. **d**, Quantification of complete blood count analysis of white blood cells (WBCs), red blood cells (RBC), platelets (PLT) (left) and composition of WBCs (right) of blood samples from healthy mice treated with saline or acivicin for 10 days. Data are from $n = 8$ mice (saline) or $n = 7$ mice (acivicin). **e**, Representative flow cytometric plots of cells expressing CD45 and CD11b from the spinal cord of healthy mice treated with acivicin or saline every day for 14 days. Quantification of total CD45^{lo}CD11b⁺ microglia cell numbers in healthy mice treated with acivicin or saline. Data are from $n = 3$ mice per group. Each symbol represents an individual experiment (**b**) or mouse (**c-e**). Data are shown as means \pm s.e.m. (**b, d, e**) or means \pm s.d. (**c**). $P = 0.68$ or $P > 0.99$; n.s., not significant, as determined by two-tailed unpaired Student's t-test (**b**) or two-tailed Mann-Whitney test (**e**).

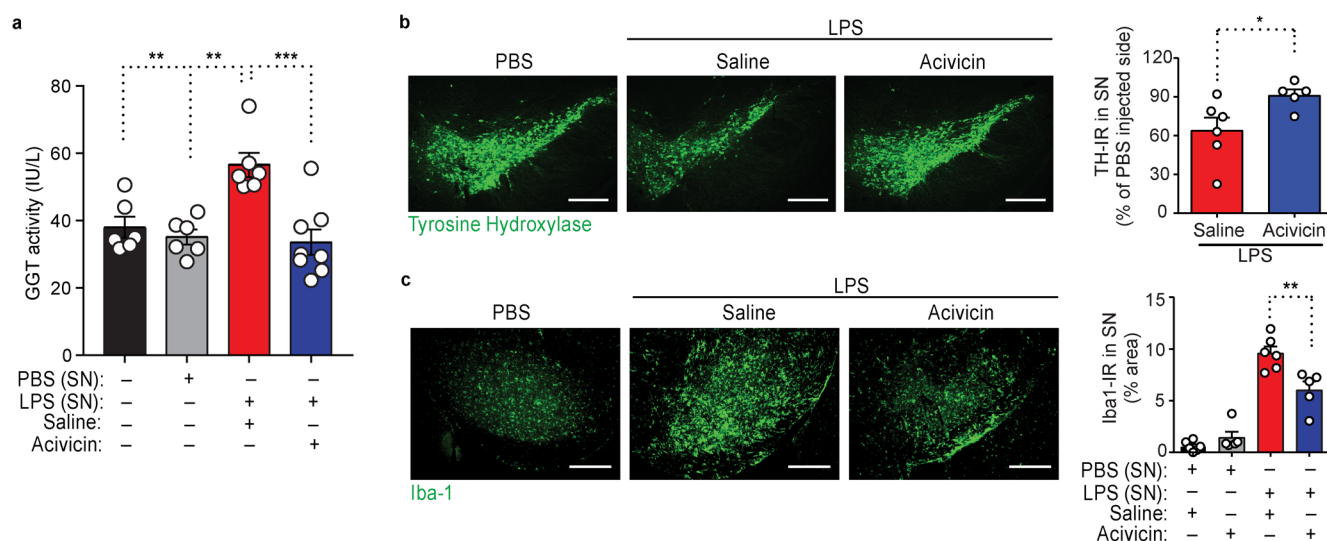


Extended Data Fig. 6 | Inhibition of GGT in macrophages. a, b, Dose response of acivicin (**a**) or GGsTop (**b**) on GGT activity measured by fluorescent probe gGlu in fibrin-stimulated BMDMs. Data are from $n = 4$ independent experiments performed in technical duplicates. **c**, Quantitative PCR analysis of *Ccl5*, *Cxcl3*, *Cxcl10* and *Il1b* expression in BMDMs isolated from *Ggt1*^{+/+} and *Ggt1*^{dwg/dwg} mice left unstimulated or stimulated with LPS for 6 hr (key). Data are from $n = 4$ mice per group. Each symbol represents an individual experiment (**a, b**) or mouse (**c**). Data are shown as means \pm s.e.m. (**a-c**). * $P < 0.05$, ** $P < 0.01$, *** $P < 0.001$, **** $P < 0.0001$, as determined by one-way ANOVA with Dunnett's multiple comparison test (**a, b**) or two-way ANOVA with Tukey's multiple comparisons test (**c**).



Extended Data Fig. 7 | See next page for caption.

Extended Data Fig. 7 | Effects of acivicin in EAE, antigen-presenting cell function and GGT1 expression. **a**, Clinical scores of MOG₃₅₋₅₅ EAE mice (upward arrow) after daily prophylactic administration of acivicin (5 mg/kg, i.p.) or saline (key) starting day 0. Data are from $n=14$ mice (acivicin), $n=15$ mice (saline). **b**, Clinical scores for MOG₃₅₋₅₅-induced EAE (upward arrow), followed by prophylactic injection of GGsTop (5 mg/kg, i.p.) or saline (key) every day beginning day 0. Data are from $n=13$ mice (MOG₃₅₋₅₅ + saline) or $n=12$ mice (MOG₃₅₋₅₅ + GGsTop). **c-f**, Flow cytometry analysis of splenocytes from MOG₃₅₋₅₅-EAE mice treated with saline or acivicin for 10 days and assessed for IL-17⁺ or IFN- γ ⁺ CD4⁺ T cells (**c**, **d**), effector memory (TEM), central memory (TCM), and naive CD4⁺ T cells (**e**), or CD25⁺ FoxP3⁺ Treg cells (**f**). Data are from $n=5$ mice per group. **g**, **h**, Flow cytometry analysis of BrdU⁺ 2D2 T cells activated with LPS primed BMDMs (pulsed with MOG₃₅₋₅₅ peptide) or anti-CD3 and anti-CD28 in the presence or absence of acivicin. Data are from $n=3$ independent experiments performed in technical duplicates. **i**, Quantitative PCR analysis of gene expression from spinal cord extracts of unimmunized healthy controls and MOG₃₅₋₅₅-EAE mice at peak disease, treated with saline or acivicin. Data are from $n=5$ mice (unimmunized healthy control), $n=7$ mice (EAE + saline), or $n=7$ mice (EAE + acivicin). **j**, Confocal microscopy of spinal cord sections from NOD mice with chronic MOG₃₅₋₅₅ EAE, treated with acivicin or saline every day starting at day 80 until day 113, showing GGT1 and CD11b immunoreactivity. Scale bar, 25 μ m. Quantification of GGT1 immunoreactivity in white matter of spinal cord. Data are from $n=7$ (EAE + acivicin) and $n=7$ (EAE + saline) mice. Each symbol represents an individual mouse (**c-f**, **i**, **j**) or an individual experiment (**g**, **h**). Data are shown as means \pm s.e.m. (**a-j**). * $P < 0.05$, ** $P < 0.01$, *** $P < 0.001$, **** $P < 0.0001$; n.s., not significant, as determined by two-tailed permutation test (**b**), two-way ANOVA with Tukey's multiple comparisons test (**c,d**), two-tailed Mann-Whitney test (**e,f,j**), or one-way ANOVA with Tukey's multiple comparisons test (**h,i**).



Extended Data Fig. 8 | Effects of acivicin in LPS-induced neurodegeneration. **a**, GGT activity in substantia nigra (SN) extracts 12 h following PBS or LPS injection in mice pretreated with acivicin or saline for 5 d. Data are from $n=6$ mice (control, PBS, or LPS + saline) or $n=8$ mice (LPS + acivicin). **b, c**, Microscopy images of brain sections spanning SN 7 d following PBS or LPS injection in mice pretreated with acivicin or saline, tissues were stained for tyrosine-hydroxylase (TH) (**b**) or Iba-1 (**c**). Scale bars, 300 μm (**b, c**). Quantification of TH (**b**) and Iba-1 (**c**) immunoreactivity in SN is shown (right). Data are from $n=6$ mice (saline) and $n=5$ mice (acivicin) (**b**); $n=6$ mice (saline + PBS or saline + LPS) and $n=5$ mice (acivicin + PBS or acivicin + LPS) (**c**). Each symbol represents an individual mouse (**a-c**). Data are shown as means \pm s.e.m. (**a-c**). * $P < 0.05$, ** $P < 0.01$, *** $P < 0.001$, as determined by two-way ANOVA with Tukey's multiple comparisons test (**a**), two-tailed Mann-Whitney test (**b**), or two-way ANOVA with Sidak's multiple comparisons test (**c**).

Reporting Summary

Nature Research wishes to improve the reproducibility of the work that we publish. This form provides structure for consistency and transparency in reporting. For further information on Nature Research policies, see [Authors & Referees](#) and the [Editorial Policy Checklist](#).

Statistics

For all statistical analyses, confirm that the following items are present in the figure legend, table legend, main text, or Methods section.

- | | |
|-----|-----------|
| n/a | Confirmed |
|-----|-----------|
- ☐ ☒ The exact sample size (*n*) for each experimental group/condition, given as a discrete number and unit of measurement
 - ☐ ☒ A statement on whether measurements were taken from distinct samples or whether the same sample was measured repeatedly
 - ☐ ☒ The statistical test(s) used AND whether they are one- or two-sided
Only common tests should be described solely by name; describe more complex techniques in the Methods section.
 - ☒ ☐ A description of all covariates tested
 - ☐ ☒ A description of any assumptions or corrections, such as tests of normality and adjustment for multiple comparisons
 - ☐ ☒ A full description of the statistical parameters including central tendency (e.g. means) or other basic estimates (e.g. regression coefficient) AND variation (e.g. standard deviation) or associated estimates of uncertainty (e.g. confidence intervals)
 - ☐ ☒ For null hypothesis testing, the test statistic (e.g. *F*, *t*, *r*) with confidence intervals, effect sizes, degrees of freedom and *P* value noted
Give P values as exact values whenever suitable.
 - ☒ ☐ For Bayesian analysis, information on the choice of priors and Markov chain Monte Carlo settings
 - ☒ ☐ For hierarchical and complex designs, identification of the appropriate level for tests and full reporting of outcomes
 - ☒ ☐ Estimates of effect sizes (e.g. Cohen's *d*, Pearson's *r*), indicating how they were calculated

Our web collection on [statistics for biologists](#) contains articles on many of the points above.

Software and code

Policy information about [availability of computer code](#)

Data collection

qPCR data were collected on the StepOnePlus™ Real-Time PCR System (ThermoFisher Scientific). Flow cytometry data were acquired on a BD LSR II and ARIAL sorter (BD Biosciences) with BD FACSDiva™ v8 software. The complete blood cell counts were collected with an automated blood count analyzer (Hemavet, Drew Scientific Inc). Images were acquired with an Axioplan II epifluorescence microscope (Zeiss) equipped with Plan-Neofluar objectives (10 × 0.3 NA, 20 × 0.5 NA, or 40 × 0.75 NA) or all-in-one BZ-X700 fluorescence microscope (Keyence), Fluoview FV 1000 (Olympus) confocal microscope and Fluoview software v3.1b with Olympus 40X and 0.8 NA water-immersion lens as described⁹, or Aperio Versa scanner (Leica) with Aperio Imagescope 12.4 and 1.25X, 10X, and 20X lenses. Microglia HTS was imaged using an INCell Analyzer 2000 (GE Healthcare) equipped with a 10x objective and excitation/emission filter pairs 350 nm/455 nm and 579 nm/ 624 nm.

Data analysis

GraphPad Prism v 7.03 (GraphPad Software, Inc.) was used to prepare graphs and to perform statistical analyses.

Microglia HTS analysis: Images were analyzed with the GEHC IN-Cell Developer Toolbox version 1.9.

Flow cytometry data were analyzed using FlowJo version 10.6.2 software (Tree Star, Inc.).

R and R packages: R version 3.5.2; bindrcpp_0.2.2; dplyr_0.8.3; Seurat_3.1.1; Matrix_1.2-14; cowplot_1.0.0; ggplot2_2.2.1; RColorBrewer_1.1-2; Tophat_2.0.13; edgeR_3.24.2; Hopach_2.42.0

For bulk RNA-seq, functional enrichment analysis of a data set with 2,145 DEGs in ROS+ versus MHC II+ microglia was performed in Cytoscape v3.3 using BiNGO plugin and GO annotations downloaded on 8-Dec-2016. Filtering for GO term results with <2000 genes, 592 Biological Process terms with a corrected P-value <0.05 were found. GO term enrichment was also performed on the exclusive subsets of ROS-expressed genes (1,613) and MHC II-expressed genes (924), resulting in 58 and 783 filtered Biological Process terms, respectively. From these GO term results, 6 were selected that represented processes of interest, maximum specificity (i.e., low total gene membership) and exclusive significance (i.e., non-overlapping terms). Interaction networks were constructed for each set of DEGs associated with these 6 terms using GeneMANIA v3.4.1. Default co-expression and physical interaction sources were selected from the

network construction; the option to add a number of related genes was set to zero; all other settings were default values. The interaction data from GeneMANIA was imported into Cytoscape for visualization and data overlay. Co-expression clusters were defined as the largest connected set of either up- or down-regulated genes and extracted as subnetworks

For scRNA-seq, reads were aligned to the mm10 assembly using the Cellranger count v2.0.1 (10x Genomics) and all downstream clustering analysis, visualisation, and differential gene expression analysis was performed using the Seurat v3.4.2 R Tool kit as described in Methods.

The statistical significance of the changes in the mean clinical score for each day of the EAE experiment was estimated using permutation tests. The corresponding P values were estimated using 1000 permutations. In each permutation, mice were randomly permuted.

For manuscripts utilizing custom algorithms or software that are central to the research but not yet described in published literature, software must be made available to editors/reviewers. We strongly encourage code deposition in a community repository (e.g. GitHub). See the Nature Research [guidelines for submitting code & software](#) for further information.

Data

Policy information about [availability of data](#)

All manuscripts must include a [data availability statement](#). This statement should provide the following information, where applicable:

- Accession codes, unique identifiers, or web links for publicly available datasets
- A list of figures that have associated raw data
- A description of any restrictions on data availability

The scRNA-seq and bulk RNA-seq data files are available in the Gene Expression Omnibus database under SuperSeries accession code GSE146295.

GGT pathway model will be available at WikiPathways: <https://www.wikipathways.org/instance/WP4466>. All data generated and analyzed in this study are available within the paper. Any additional data can be made available from the corresponding author upon reasonable request.

Field-specific reporting

Please select the one below that is the best fit for your research. If you are not sure, read the appropriate sections before making your selection.

☒ Life sciences ☐ Behavioural & social sciences ☐ Ecological, evolutionary & environmental sciences

For a reference copy of the document with all sections, see nature.com/documents/nr-reporting-summary-flat.pdf

Life sciences study design

All studies must disclose on these points even when the disclosure is negative.

Sample size

No statistical methods were used to predetermine sample size, but our sample sizes are similar to those reported previously for pharmacologic treatments in EAE models (Adams et al., J Exp Med 204, 571-582 (2007); Ryu et al., Nat Immunol., 19, 1212-1223 (2018); and RNAseq experiments (Bagadia et al., Nat Immunol 20, 1174-1185 (2019); Zemmour et al., Nat Immunol 19, 291-301 (2018))

Data exclusions

No samples or animals were excluded from the analysis.

The R toolkit Seurat was used for quality control (QC) processing, graph-based clustering, visualizations, and differential gene expression analyses of scRNA-seq data and performed in R version 3.4.2. Cellranger Aggr aggregated dataset of 9,079 cells were filtered with QC parameters 200 – 5,000 nFeature_RNA per cell, > 5% and > 25% mitochondrial and ribosomal genes, respectively. The percent of mitochondrial (percent.mito) and ribosomal (percent.ribo) genes were regressed out. All remaining variable genes were used for downstream analyses, including immediate early response genes induced by cell isolation procedure²⁴. Following QC, 17,814 genes across 8,701 single cells were analyzed with Seurat version 3 default parameters unless otherwise stated Extended Data Fig. 2c,d). To determine statistically significant principal components (PC), JackStraw was performed with num.replicate = 100. For clustering analysis, FindNeighbors and FindClusters were used with the first 20 significant PC and a resolution = 0.8, respectively. For subclustering analysis, monocyte/macrophage or microglia clusters in Fig 1h, were separately re-clustered by running through the Seurat pipeline as described above. FindClusters was implemented at a resolution = 0.4 for monocyte/macrophages or resolution = 0.3 for microglia subcluster analysis. Differentially expressed genes (DEGs) for each cluster was determined by FindAllMarkers with parameters min.pct, 0.25; log2fc.threshold, 0.25 using Wilcox statistical test. Genes that met the above criteria with adjusted P-value < 0.05 (Benjamini-Hochberg correction) were used for functional enrichment analysis. GO enrichment analysis of DEGs was performed in DAVID and Metascape bioinformatic resources.

Replication

The number of experimental repeats is detailed at the bottom of each legend for each figure. All attempts at replication following the protocols described in the methods were successful. Since microglia activation can be influenced by the culture conditions, FBS was batch-tested with three QC criteria: high cell yield, no effect on morphologic activation at baseline, and response to LPS-induced morphologic activation by at least 50%. M-CSF was also batch-tested for effects on baseline gene expression and cell differentiation. Microglia activation assays in the presence of small molecule inhibitors performed at the UCSF Small Molecule Discovery Center (SMDC) were replicated at the Gladstone Institutes with similar results.

Randomization

Animals were randomly assigned to experimental groups at the beginning of experiments. The randomization of animal studies is stated in the Method section.

Blinding

For EAE studies and histopathological experiments, the researchers were blinded as to the mouse treatment conditions. Mice were divided into experimental groups in an unbiased manner. The mice were randomized and coded to assign groups or collect data for animal

Reporting for specific materials, systems and methods

We require information from authors about some types of materials, experimental systems and methods used in many studies. Here, indicate whether each material, system or method listed is relevant to your study. If you are not sure if a list item applies to your research, read the appropriate section before selecting a response.

Materials & experimental systems

n/a	Involved in the study
<input type="checkbox"/>	<input checked="" type="checkbox"/> Antibodies
<input checked="" type="checkbox"/>	<input type="checkbox"/> Eukaryotic cell lines
<input checked="" type="checkbox"/>	<input type="checkbox"/> Palaeontology
<input type="checkbox"/>	<input checked="" type="checkbox"/> Animals and other organisms
<input checked="" type="checkbox"/>	<input type="checkbox"/> Human research participants
<input checked="" type="checkbox"/>	<input type="checkbox"/> Clinical data

Methods

n/a	Involved in the study
<input checked="" type="checkbox"/>	<input type="checkbox"/> ChIP-seq
<input type="checkbox"/>	<input checked="" type="checkbox"/> Flow cytometry
<input checked="" type="checkbox"/>	<input type="checkbox"/> MRI-based neuroimaging

Antibodies

Antibodies used

Flow cytometry: Cells were stained with CD3 (17A2, Biolegend), CD4 (GK1.5, Biolegend), CD8 (53-6.7, Biolegend), CD62L (MEL-14, Biolegend), CD44 (1M7, Biolegend), CD25 (3C7, Biolegend), CD11b (M1/70, Biolegend), CD45 (30-F11, Biolegend), MHCII (M5/114.15.2, Biolegend), IL-17A (TC11-18H10.1, eBioscience), IFN- γ (XMG1.2, eBioscience), Foxp3 (FJK-16S, eBioscience), or GGT1 (1:100; ab55138, Abcam). Antibodies were used at 1:300 dilution unless otherwise stated in the Methods.

Immunohistochemistry: Tissue sections were stained with mouse anti-gp91 (CYBB, 1:200; 53, BD Biosciences), mouse anti-iNOS (1:500, 610329, BD Biosciences), rabbit anti-Iba-1 (1:1000; 019-19741, Wako), rat anti-MHCII (1:300; M5/114.15.2, Thermo Fisher Scientific), rabbit-coagulation factor X (F10; NBP1-33320, NOVUS), mouse anti-CLEC4E (1:700; AT16E3, abcam), mouse anti-neurofilament H non-phosphorylated (1:100; SMI-32, BioLegend), mouse anti-myelin basic protein (1:100; SMI-99, BioLegend), rabbit polyclonal anti-GGT1 (1:100; SAB2701966, Sigma), goat polyclonal anti-4HNE (1:200; ab46544, Abcam), or rabbit polyclonal anti-TH (1:2000; P40101, Pel Freez)

Validation

All antibodies used in this study are from commercial sources and have been validated by the vendors and previous studies done by our lab or other labs. Antibodies CD3 (17A2, Biolegend), CD4 (GK1.5, Biolegend), CD8 (53-6.7, Biolegend), CD11b (M1/70, Biolegend), CD45 (30-F11, Biolegend), MHCII (M5/114.15.2, Biolegend), IL-17A (TC11-18H10.1, eBioscience), IFN- γ (XMG1.2, eBioscience), Foxp3 (FJK-16S, eBioscience), mouse anti-iNOS, rabbit anti-Iba-1, rat anti-MHCII, mouse anti-neurofilament H non-phosphorylated SMI-32, mouse anti-myelin basic protein, were previously validated in our publications Adams et al., J Exp Med 204, 571-582 (2007); Ryu et al., Nat Commun 6, (2015); Ryu et al., Nat Immunol., 19, 1212-1223 (2018); Petersen et al., Neuron 96, 1003-1012 (2017). Validation data are available on the manufacturer's website. CD62L (MEL-14, Biolegend), CD44 (1M7, Biolegend), CD25 (3C7, Biolegend) were validated in mouse splenocytes by the manufacture. Mouse anti-CLEC4E and rabbit anti-GGT1 were validated by immunohistochemistry in colorectal cancer and xenograft tissue by the manufacture; and mouse anti-gp91 was validated by immunohistochemistry in mouse macrophages by the manufacture. We validated antibodies in spinal cord tissue from healthy and EAE mice using species-specific secondary antibody controls. Appropriate antibody dilutions were performed based on preliminary experiments and intensity of fluorescent signals.

Animals and other organisms

Policy information about [studies involving animals](#); [ARRIVE guidelines](#) recommended for reporting animal research

Laboratory animals

SJL/J, NOD, C57BL/6, and Ggt1dwg/dwg mice were purchased from The Jackson Laboratory, and Sprague-Dawley rat P0 litters were purchased from Charles River Laboratories. Ccr2RFP/RFP mice on C57BL/6 background (provided by I. F. Charo, Gladstone Institutes) were crossed with Cx3cr1GFP/GFP mice⁵⁸ to generate Cx3cr1GFP/+Ccr2RFP/+ mice.

Wild animals

The study did not involve wild animals

Field-collected samples

The study did not involve samples collected from the field

Ethics oversight

Mice were housed under IACUC guidelines in a temperature and humidity-controlled facility with 12 h light–12 h dark cycle and ad libitum feeding. All animal protocols were approved by the Committee of Animal Research at the University of California, San Francisco, and were in accordance with the National Institutes of Health guidelines.

Note that full information on the approval of the study protocol must also be provided in the manuscript.

Flow Cytometry

Plots

Confirm that:

- ☒ The axis labels state the marker and fluorochrome used (e.g. CD4-FITC).
- ☒ The axis scales are clearly visible. Include numbers along axes only for bottom left plot of group (a 'group' is an analysis of identical markers).
- ☒ All plots are contour plots with outliers or pseudocolor plots.
- ☒ A numerical value for number of cells or percentage (with statistics) is provided.

Methodology

Sample preparation	Sample preparation for Tox-seq assay is described in detail in the Methods of the manuscript. Primary splenocytes and spinal cord leukocytes were harvested and processed for flow cytometric analysis as described in Methods. Extended Data Fig 5: Cultured BMDMs were incubated with Sytox blue live/dead stain and processed for flow cytometric analysis; and Extended Data Fig 7: Cells were harvested, stained for surface antigens, fixed and then immediately analyzed by LSR II (BD Biosciences).
Instrument	ARIAII & LSR II (BD)
Software	BD FACSDiva v8 and FlowJo software v10
Cell population abundance	When cells were sorted or enriched, the purity was confirmed by flow cytometry and routinely >95 %.
Gating strategy	Extended Data Fig 1: single cells were gated by FSC-A/SSC-A and then doublet discrimination was performed first by FSC-H/FSC-W followed by SSC-H/SSC-W. Next, live sytox- CD11b+ cells were gated for, then cells were sorted based on ROS- and ROS+. Extended Data Fig 4: single cells were gated by FSC-A/SSC-A and then doublet discrimination was performed first by FSC-H/FSC-W followed by SSC-H/SSC-W. Next, CD45hiCD11b+ cells and CD45loCD11b+ cells were gated on, followed by sorting for ROS-MHCII-, ROS-MHCII+, ROS+MHCII-, ROS+MHCII+. Extended Data Fig 5c: single cells were gated by FSC-A/SSC-A and then doublet discrimination was performed first by FSC-H/FSC-W, then CD45+ cells were gated on followed by live CD45+ Sytox blue- and dead CD45+ Sytox blue+. Extended Data Fig 5e: single cells were gated by FSC-A/SSC-A and then doublet discrimination was performed first by FSC-H/FSC-W, then CD45+ cells were gated on followed by CD45 and CD11b expressing populations

- ☒ Tick this box to confirm that a figure exemplifying the gating strategy is provided in the Supplementary Information.